

Visitor map

Level 2

ARGYLE GALLERIES

- A** Medals and Money 38
- B** Islands to Ice: Antarctic Gallery 112

HENRY HUNTER GALLERIES

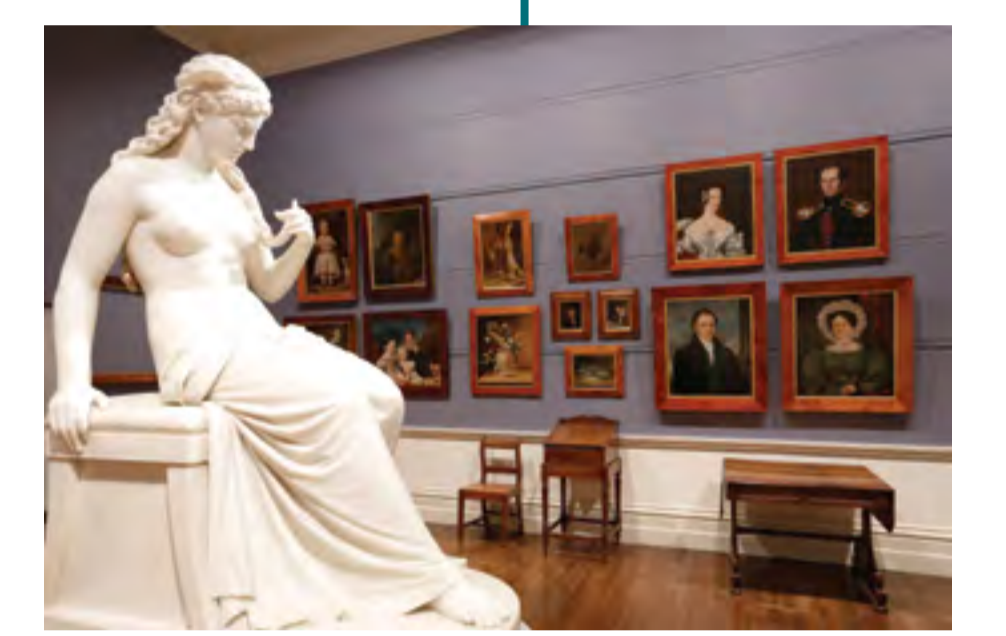
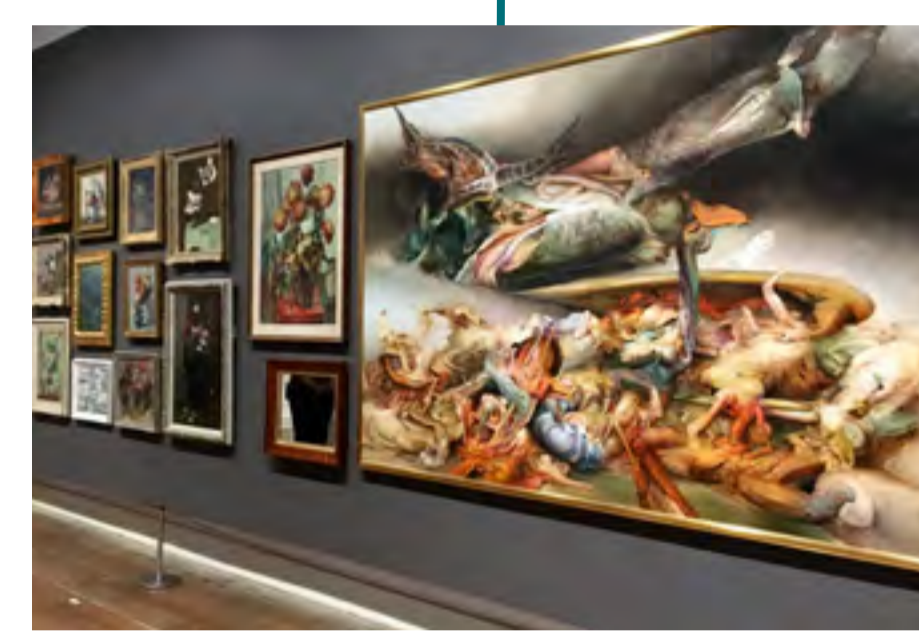
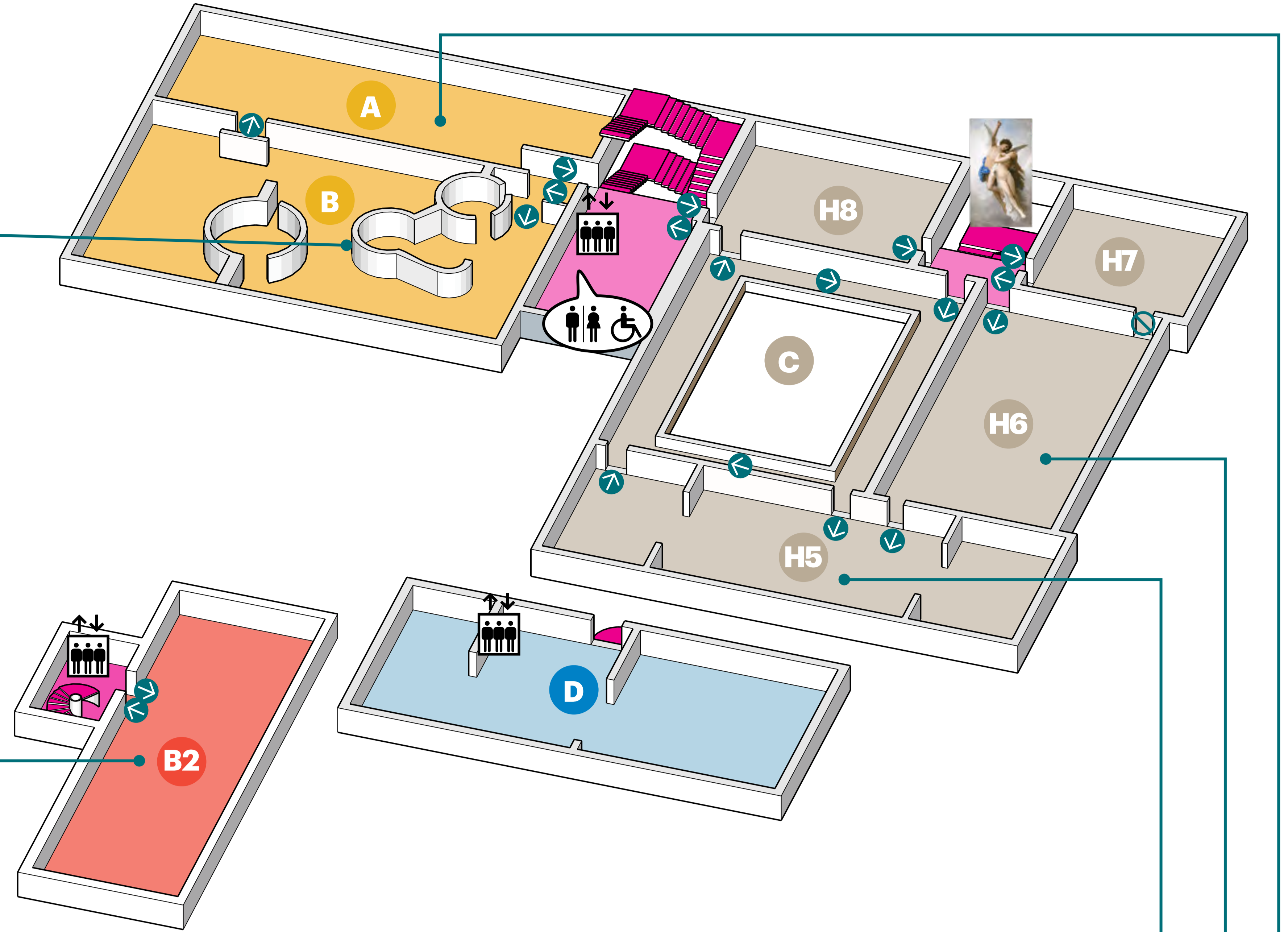
Tasmania: Art and Design, 1800 – late 20th century

- H5** Colonial art and decorative arts 54
- H6** *This Too Shall Pass*: Portraits and still life 36
- H7** Salon Gallery: Temporary exhibitions 12
- H8** *Not So Easy: Australian Design and Identity since Federation*: Ceramics 28
- C** The Central Gallery 160
- D** Centre for Learning and Discovery: Programmed activities only 60

BOND STORE GALLERIES

Bond Store 2

- B2** *Our land: parrawa, parrawa! Go away!* 19th century Tasmania 74



Level 1

ARGYLE GALLERIES

- A1-4** Temporary exhibitions 136

HENRY HUNTER GALLERIES

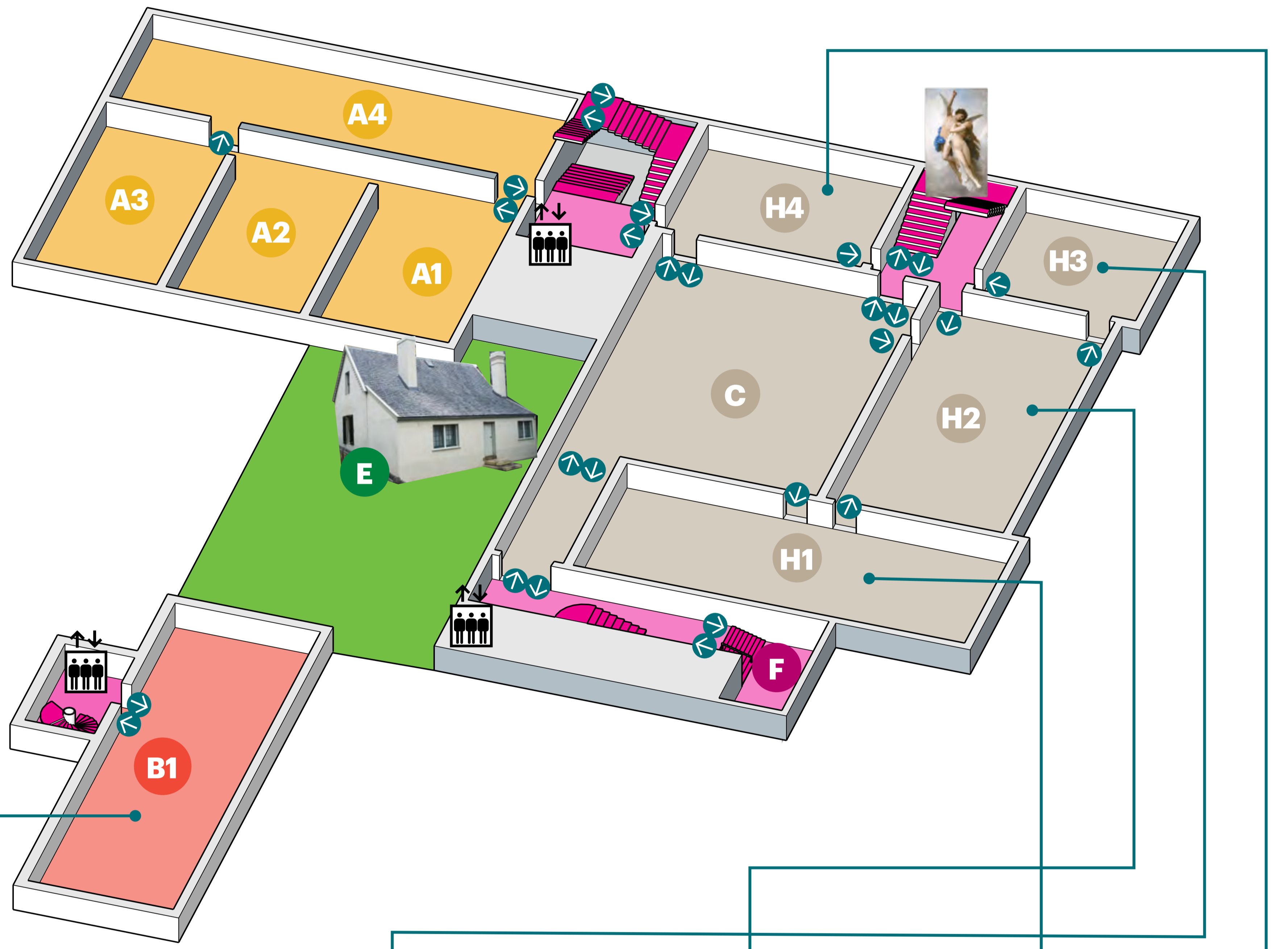
Tasmania: Life and Environment

- H1** *ningina tunapri*: Tasmanian Aboriginal culture 46
- H2** *Tasmania: Earth and Life*: Natural sciences 36
- H3** The Thylacine Gallery 12
- H4** *Power of Change*: 20th century Tasmania 28
- C** The Central Gallery 160
- E** Private Secretary's Cottage (1815)
- F** Link Foyer: Temporary displays 40

BOND STORE GALLERIES

Bond Store 1

- B1** *Our changing land: Creating Tasmania* 19th century Tasmania 74



Ground

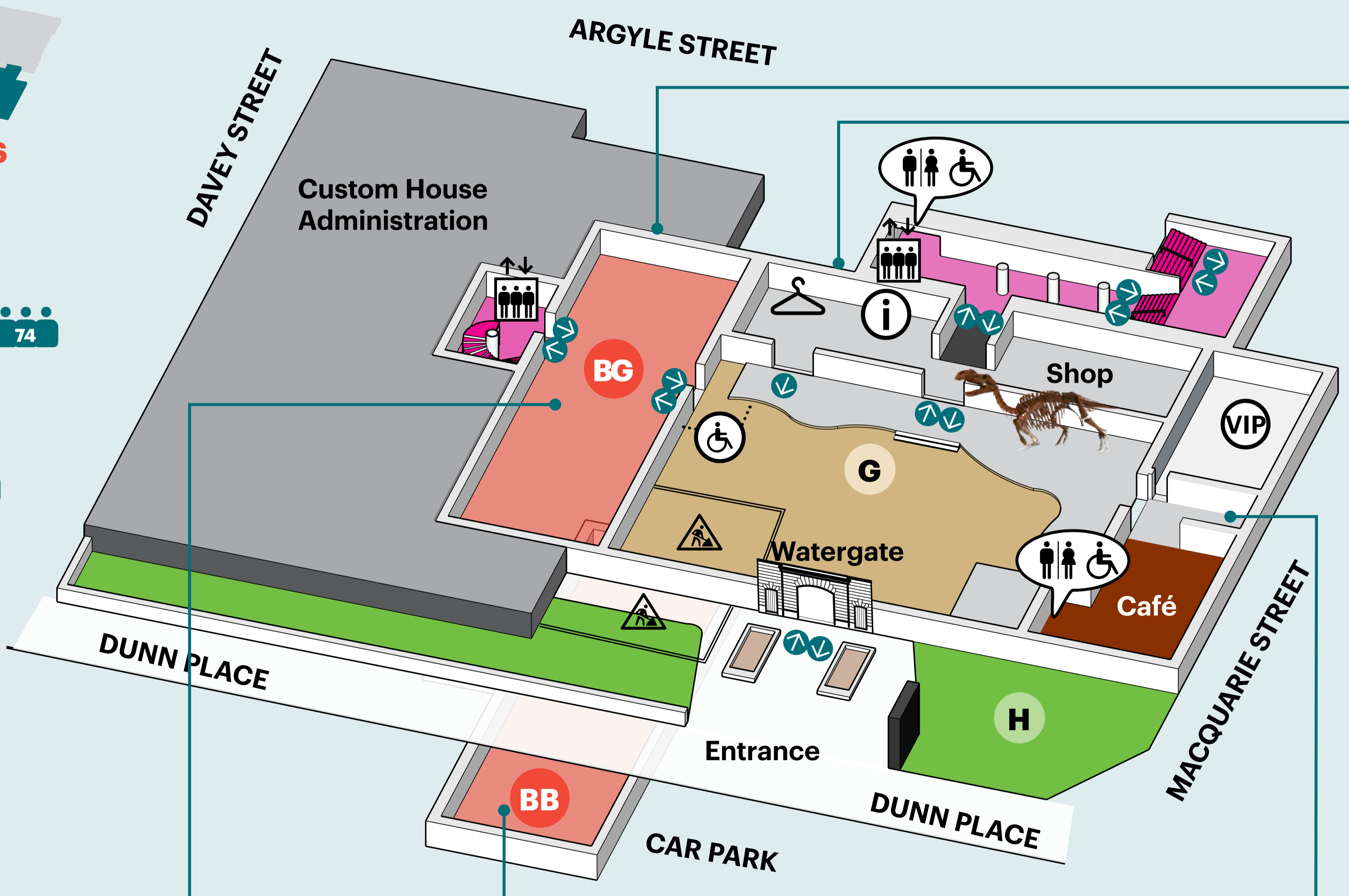
BOND STORE GALLERIES

Bond Store Ground

- BG** *Our living land: Encountering an upside down world* 19th century Tasmania 74

Bond Store Basement

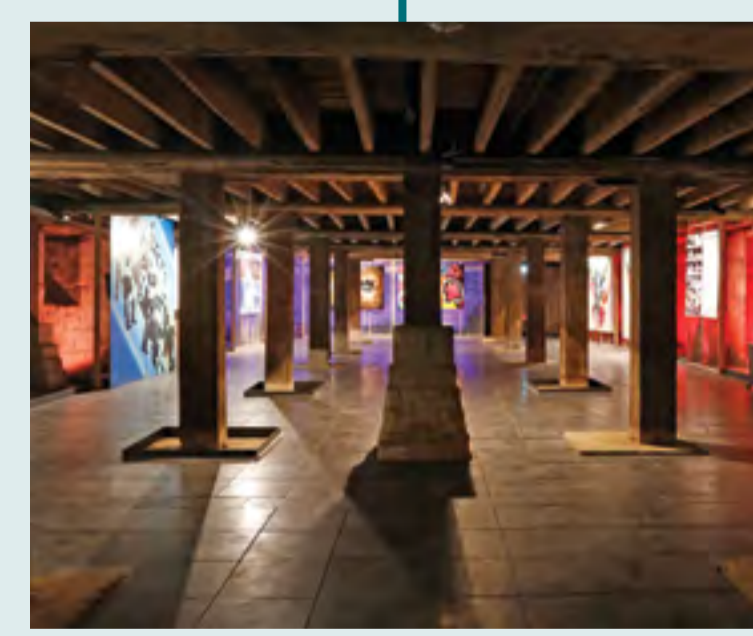
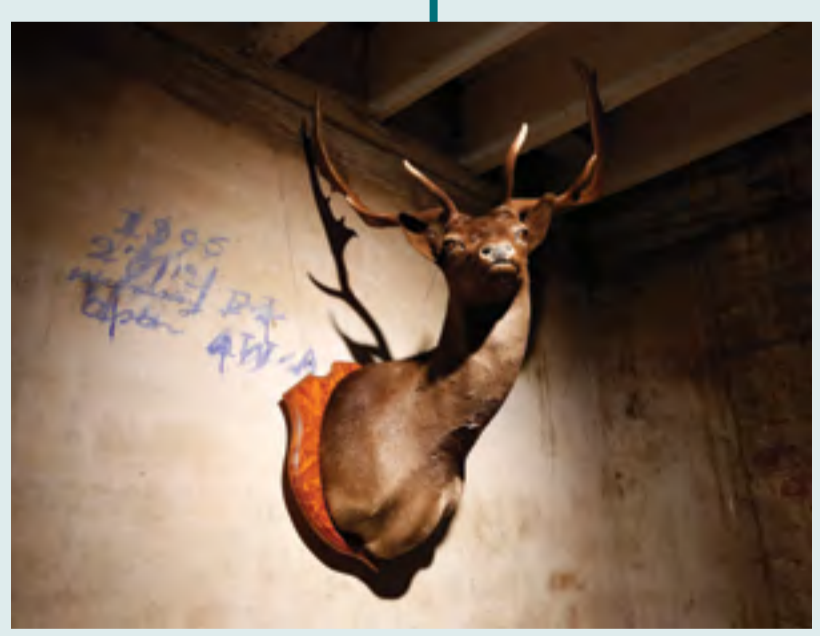
- BB** Temporary exhibition and event space 74
- G** Courtyard
- H** Welcome Garden



The Bond Store (1824-26)
Access via the Courtyard
Originally served as a Government store for bonded goods such as tobacco and spirits. The Bond Store galleries feature permanent exhibitions exploring 19th century Tasmanian history.



The Queen's Warehouse (1869-70)



Commissariat Store (1808-10), Tasmania's oldest surviving public building.

Key

- Toilets
- Lifts
- Locker area
- Visitor Information Desk
- Members' Lounge
- Visitor limit per gallery

