

Visitor map



Level 2



ARGYLE GALLERIES

- A** Medals and Money
- B** Islands to Ice: Antarctic Gallery

HENRY HUNTER GALLERIES

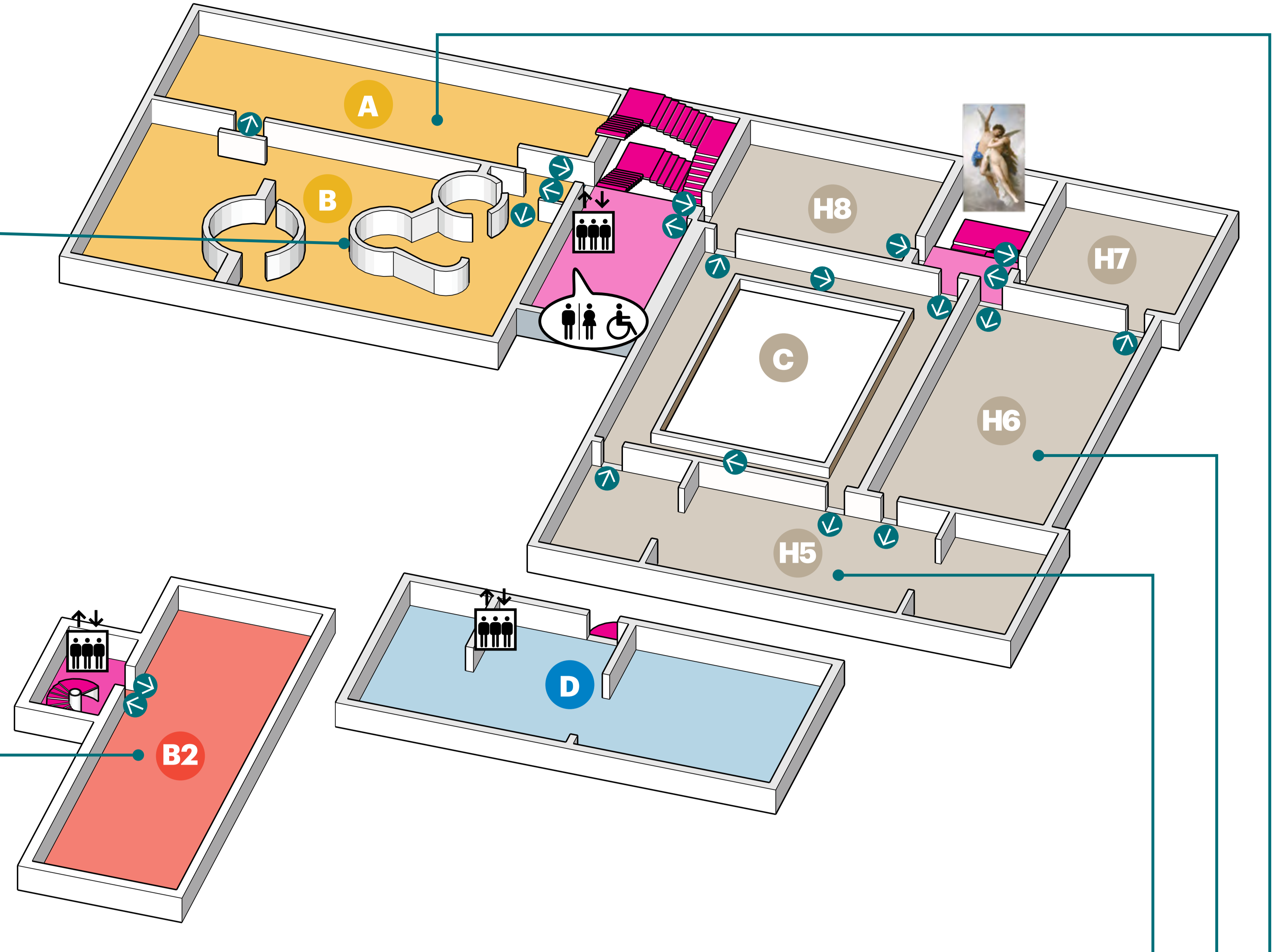
Tasmania: Art and Design, 1800 – late 20th century

- H5** Colonial art and decorative arts
- H6** *This Too Shall Pass*: Portraits and still life
- H7** Salon Gallery: Temporary exhibitions
- H8** *Not So Easy: Australian Design and Identity since Federation*: Ceramics

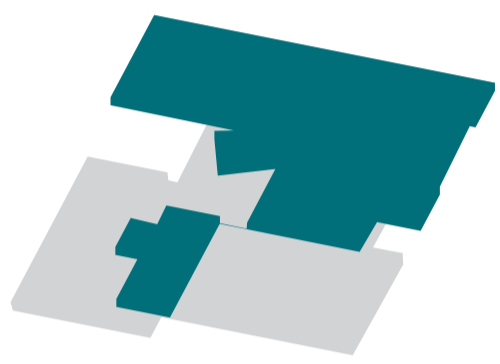
- C** The Central Gallery
- D** Centre for Learning and Discovery: Programmed activities only

BOND STORE GALLERIES

- Bond Store 2**
- B2** *Our land: parrawa, parrawa! Go away!*
19th century Tasmania



Level 1



ARGYLE GALLERIES

- A1-4** Temporary exhibitions

HENRY HUNTER GALLERIES

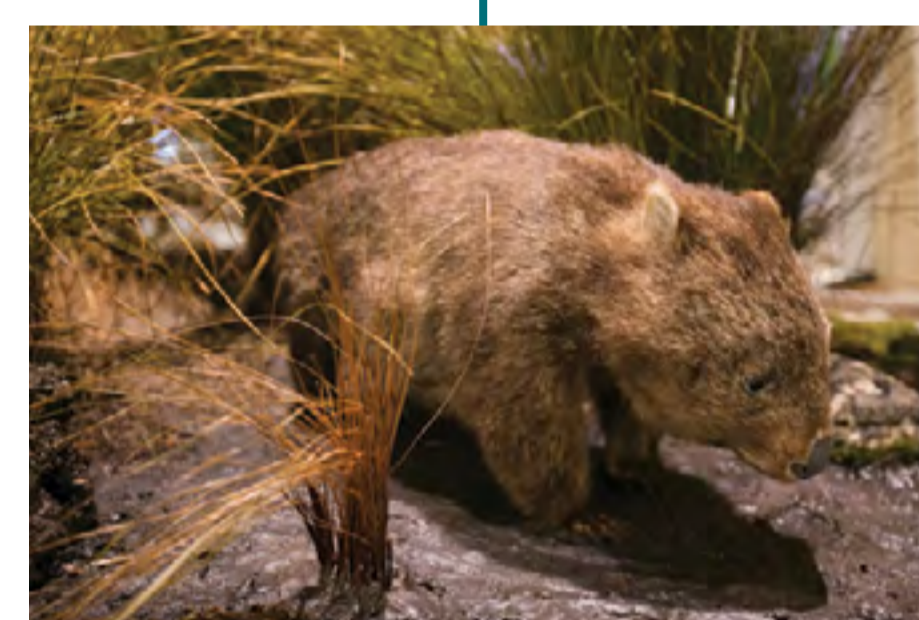
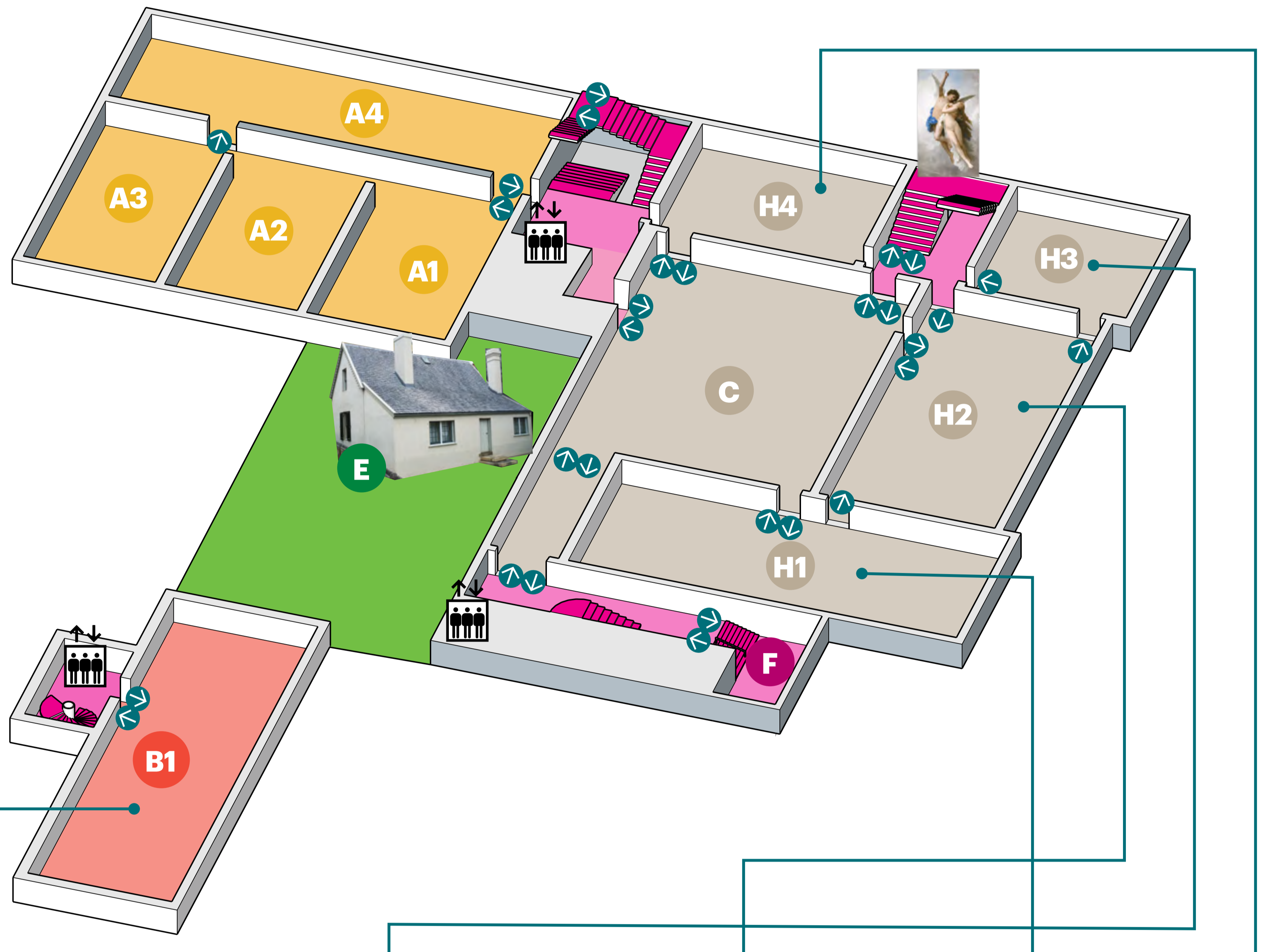
Tasmania: Life and Environment

- H1** *ningina tunapri*: Tasmanian Aboriginal culture
- H2** *Tasmania: Earth and Life*: Natural sciences
- H3** The Thylacine Gallery
- H4** *mapiya lumi | around here*

- C** The Central Gallery
- E** Private Secretary's Cottage (1815)
- F** Link Foyer: Temporary displays

BOND STORE GALLERIES

- Bond Store 1**
- B1** *Our changing land: Creating Tasmania*
19th century Tasmania



Ground

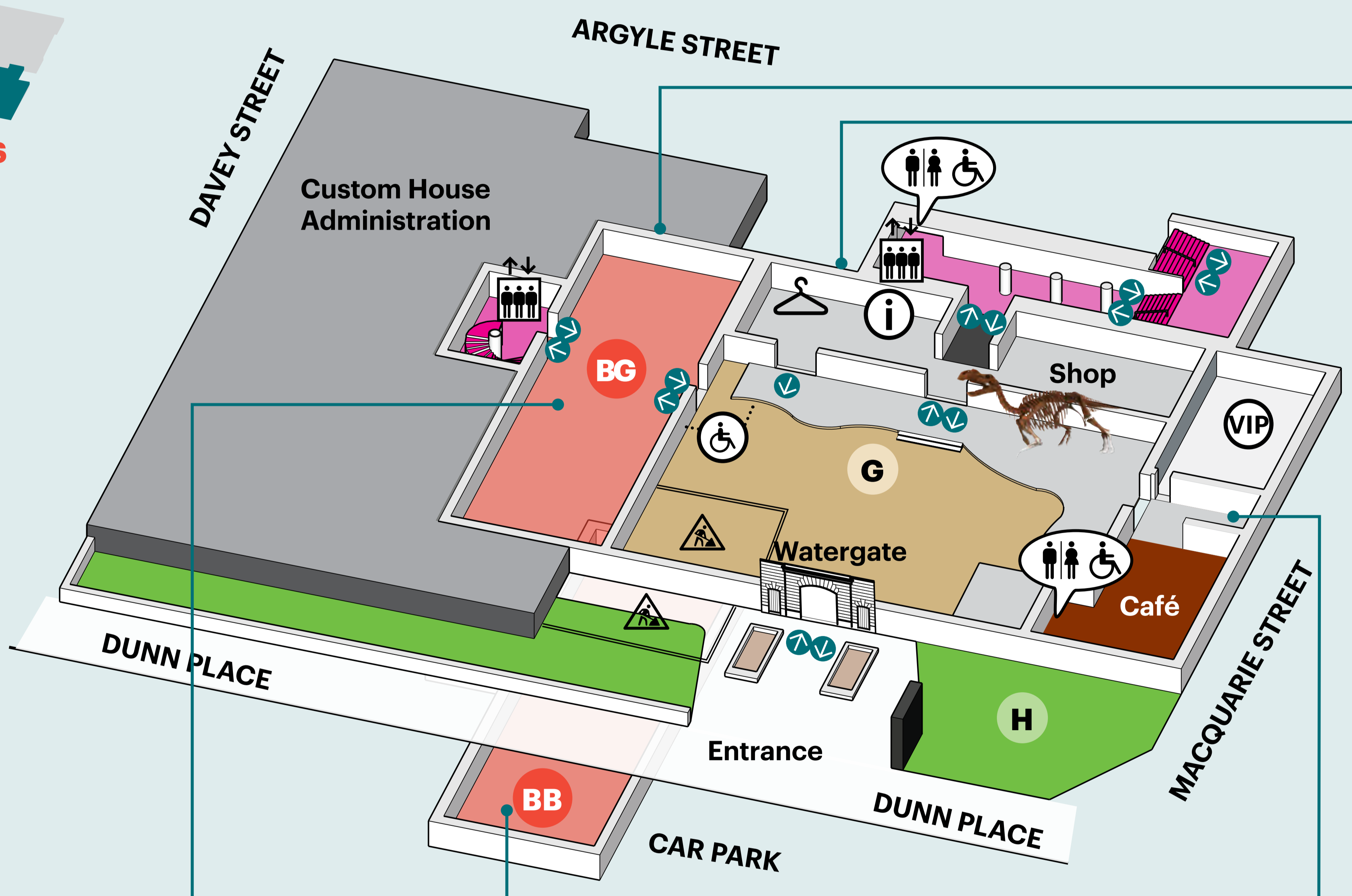


BOND STORE GALLERIES

- Bond Store Ground**
- BG** *Our living land: Encountering an upside down world*
19th century Tasmania

Bond Store Basement

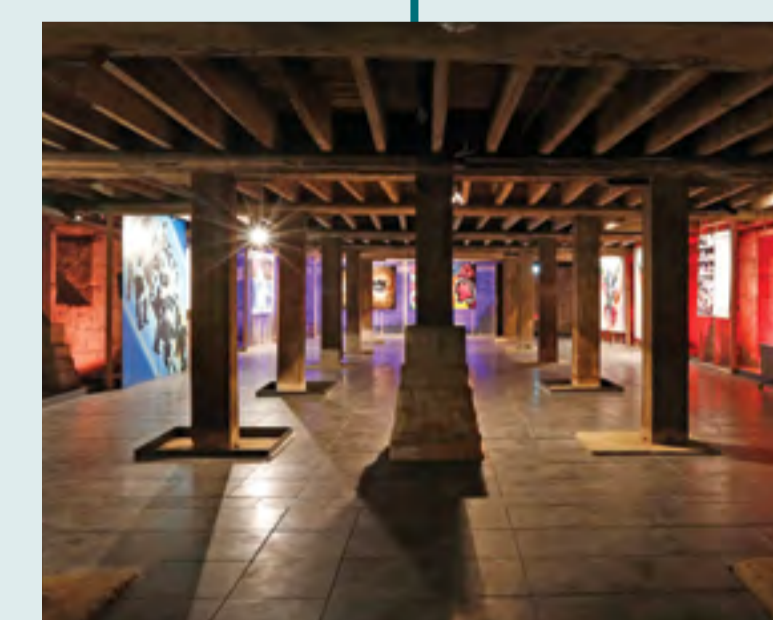
- BB** Temporary exhibition and event space
- G** Courtyard
- H** Welcome Garden



The Bond Store
(1824-26)
Access via the Courtyard
Originally served as a Government store for bonded goods such as tobacco and spirits. The Bond Store galleries feature permanent exhibitions exploring 19th century Tasmanian history.



The Queen's Warehouse
(1869-70)



Commissariat Store
(1808-10), Tasmania's oldest surviving public building.

Key

- Toilets
- Lifts
- Locker area
- Visitor Information Desk
- Members' Lounge

