

THE TASMANIAN MUSEUM & ART GALLERY • Annual Report 2002-2003



His Excellency

The Honourable Sir Guy Green AC KBE

Governor of Tasmania

To His Excellency the Governor

In accordance with Section 7 of the Tasmanian Museum Act 1950, the Trustees of the Tasmanian Museum and Art Gallery have great honour in submitting their Annual Report on the activities of the Tasmanian Museum and Art Gallery for the year ending 30 June 2003.

In submitting this report we would like to take the opportunity to thank sincerely the many people who have made invaluable contributions to the operation of the Tasmanian Museum and Art Gallery during the year 2002/2003. The Trustees especially wish to thank the Premier as Minister for the Arts, the Department of State Development, the staff, the volunteers, the Friends of TMAG and the Art Foundation of Tasmania for their continuing contribution to the museum's growth and development.

Dr A V (Tony) Brown BSc (Hons) PhD

Chairman of Trustees

September 2003

*Pictured: Items from
the Wongs' Collection*



Vision

The Tasmanian Museum and Art Gallery aims to provide, promote and facilitate interaction with, and understanding of, the cultural and natural world for present and future generations.

Role

The Tasmanian Museum and Art Gallery collects, preserves, researches, displays, interprets and safeguards the physical evidence of the natural and cultural heritage of Tasmania, together with relevant material from interstate and overseas.

Statement of Purpose

The purpose of this collection is to provide present and future generations with the opportunity to gain information and insight into their world.

The Tasmanian Museum and Art Gallery:

- aims to provide an environment that both stimulates and educates the general public;
- collects and conserves material evidence within the areas of humanities, including visual arts, history and anthropology, and the biological and physical sciences;
- undertakes research on the collections within changing intellectual, social and environmental contexts;
- interprets and presents its collections and research through diverse programs and publications which provide opportunity for public access and participation.



Photography by Terence Bogue



The Tasmanian Museum and Art Gallery is controlled by a Board of Trustees set up by the Tasmanian Museum Act 1950. The Museum, established in Hobart by the Royal Society of Tasmania, was opened to the public in 1852. The original building on the present site in Argyle Street between Constitution Dock and Macquarie Street was opened in 1863.

In 1885 the Museum became a Government authority under the control of a Board of Trustees that also controlled the Royal Botanical Gardens.

In 1950 two new boards were set up, one to administer the Tasmanian Museum and Art Gallery and the other the Royal Botanical Gardens.

In 1965, the Trustees took responsibility for the West Coast Pioneers' Memorial Museum at Zeehan under the West Coast Memorial Museum Act 1965. This act was repealed in 1994, placing the management responsibility with the West Coast Heritage Authority whilst the collection remains on long-term loan from the Trustees of the TMAg.

Board of Trustees (as at 30 June 2003)

Dr A V (Tony) Brown BSc (Hons) PhD (Chairman)
 Ms Robyn Hopcroft BA Dip Ed LLB (Hons) M Leg St
 Mrs Katie McNamara BPharm(Hons) MPS
 Alderman Dr John Freeman MBBS FRACP
 Professor James Reid BSc PhD DSc
 Professor Henry Reynolds BA (Hons) MA DLitt
 Mr Euan Hills

Mr Bill Bleathman (Director)

Left: view of TMAg Rosny



The Tasmanian Museum and Art Gallery:

- Purchase of the National Archives Building at Rosny as a dedicated TMAG collection facility.
- Record visitor levels of 255,000.
- Unique partnership between the Tasmanian Museum and Art Gallery, the Queen Victoria Museum and Art Gallery, the State Government and the Federal Hotels and Resorts to purchase the eight skin Tasmanian Tiger Rug.
- Donation of extensive Chinese ceramics collection.
- New senior management structure for the museum implemented.
- New position of Collections Registrar created.

Below left: TMAG Director, Bill Bleathman, Premier Jim Bacon and Secretary DTPHA, Jeff Kelly, following the signing over of Rosny
Below right: Premier Jim Bacon and Senator Eric Abetz, exchanging contracts on TMAG Rosny. Above right Thylacine skin rug jointly purchased by TMAG, QVMAG and Federal Hotels and Resorts. Below right: Wongs' Collection



Photography by Terence Bogue



STATEMENT OF COMPLIANCE	i
AIMS OF THE TASMANIAN MUSEUM AND ART GALLERY	ii
THE BOARD OF TRUSTEES	iii
HIGHLIGHTS OF THE YEAR	iv
CHAIRMAN'S REPORT	1
DIRECTOR'S REPORT	2
ADMINISTRATION	3
PUBLIC PROGRAMS & OPERATIONS	4
Exhibition Program	5
Exhibition Department	9
Visitor Services	11
Front of House	14
COLLECTIONS & RESEARCH	15
Art Department	16
Decorative Arts	19
History	20
Conservation Department	22
Information Services	23
Indigenous Cultures	27
Herbarium	29
Vertebrate Zoology	31
Invertebrate Zoology	35
Geology	37
ACQUISITIONS	39
PUBLICATIONS	44
LIST OF STAFF	46
APPENDICES	47





The financial year, 2002/2003, was a year in which Tasmanian Museum and Art Gallery (TMAG) achieved a long term goal with the acquisition of international museum standard storage.

Lack of adequate storage space at our city site has been a fundamental drawback to the gallery for many years. In February 2003 the State Government provided funding to enable TMAG to purchase the vacant National Archives Buildings at Rosny, thereby delivering the TMAG 5,500 square metres of collection storage.

This State Government initiative provides the museum with the facilities to house collections in more appropriate conditions and also enables TMAG to reassess its public program opportunities at the TMAG City site.

The strategic directions of the museum's public programs were reviewed during the year. It was decided to focus on the dual priorities encompassing an on-going major exhibition program, together with a higher level of involvement in community based events. This strategy resulted in visitation of almost 255,000 during the year. This is an increase of almost 70,000 on the previous 12 month period. The museum continues to receive positive reviews on its travelling programs. Jorg Schemiesser's exhibition *Breaking the Ice* is touring overseas, and the national touring exhibition *Creating a Gothic Paradise: Pugin at the Antipodes* has received critical acclaim nationally and internationally.

The TMAG is a participant in national collection projects. It continues to participate in the Australian Museums On-Line (AMOL) project, the Australian Virtual Herbarium (AVH) and the development of the Online Zoological Collections in Australian Museums (OZCAM) project.

The Australian Virtual Herbarium Project in particular is progressing well. The project aims to make available on line the wealth of information associated with scientific plant specimens. This involves verifying all of the collection data held in Herbaria throughout Australia, and in Tasmania's case approximately 370,000 specimens in the collection of

the Tasmanian Museum and Art Gallery (Tasmanian Herbarium). Museum researchers have also contributed to a major review of the naturalised non-native flora of Australia.

Professional staff delivered 20 papers and represented the museum and the state at conferences both nationally and internationally. During the year, TMAG obtained a number of significant acquisitions. Whilst thanking all donors for their continuing contributions, I would like to pay particular thanks to Federal Hotels and Resorts for their commitment in securing the Thylacine Rug jointly for TMAG and Queen Victoria Museum and Art Gallery.

Another major acquisition during the year was the donation of 117 pieces of Chinese ceramics to the museum by Professor and Mrs Wong. Through their generosity visitors to our institution will be able to experience icons from one of the world's great cultures.

During the year two members of the Board of Trustees retired after providing excellent service and support to the TMAG on a range of issues. Mr Euan Hills and Professor Henry Reynolds were invaluable to the museum and we wish them both well in their future endeavours. The two new appointments to the Board were Miss Julia Farrell and Mr Clive Tilsley.

I would like to thank the TMAG's volunteers and honorary curators for their continuing dedication and support for our institution. Without their help and expertise the museum high standards could not be maintained.

In closing, thank you to the Director and staff of the Tasmanian Museum and Art Gallery for delivering what has been a significant year in the history of the State's cultural flagship.

Dr A V (Tony) Brown
Chairman of Trustees

Far left: John Glover (1767-1849) Mount Wellington and Hobart Town from Kangaroo Point



Above: TMAG Custom's House building. Below: (detail) after John Gould [artist] H C Richter [lithographer] (Tasmanian Marsupial Wolf Thylacinus cynocephalus)





Above: Mr Bill Bleathman,
Director TMAG
Below: Commissariat building



Photography by Terence Bogue

The Tasmanian Museum and Art Gallery has achieved a major milestone in the organisation's long history during 2002/2003. After 40 years of requests to governments for additional storage space, the Premier as Minister for Heritage funded the purchase of the National Archives buildings at Rosny, as a dedicated storage facility for TMAG.

The significance of this initiative cannot be overstated.

For the first time in decades the museum now has space, to develop new public access on its central city site, but also to provide storage facilities that meet international museum standards at our new eastern shore facility.

It is certainly a most exciting time for the gallery.

In addition to the above, the Tasmanian Museum and Art Gallery and the Queen Victoria Museum and Art Gallery jointly acquired an eight skin Tasmanian Tiger rug at auction for a hammer price of \$270,000. The sincere thanks of both institutions is extended to Federal Hotels and Resorts and the State Government for providing funding to keep this cultural icon in the State and in public ownership. Federal Hotels and Resorts continue to provide strong support to the museum.

A review of the senior management structure of the museum was also undertaken during the year, resulting in creation of two new Deputy Director positions, one with the responsibility for Public Programs and Operations (Ms Lesley Kirby), the other Collections and Research (Dr Andrew Rozefelds). Both Lesley and Andrew have made a positive impact on the museum.

In addition, a new position of Collections Registrar was also created. TMAG also funded a trainee position in Indigenous Cultures to assist our curator with specific programs.

The museum's extensive exhibition program, both in house and touring, connected well with visitors. TMAG's major touring exhibition *Creating a Gothic Paradise: Pugin at the Antipodes* received widespread national and international acclaim. It was a tribute to the dedication and professionalism of visiting curator Mr. Brian Andrews. Another TMAG touring exhibition Jörg Schemiesser's *Breaking the Ice* continues its overseas tour.

Planning for our next major national touring exhibition *John Glover and the Colonial Picturesque* is well developed. Significant corporate and individual support has made this exhibition possible. Art Exhibitions Australia, through their CEO Ms Carol Henry, has provided Commonwealth indemnity for the project as well as partnering the TMAG with the national tour. Mazda Australia is the naming rights sponsor for the exhibition and continues to be a strong supporter of the Arts in Australia.

Over 254,000 visitors experienced the TMAG during the year.

The Art Foundation of Tasmania continues to raise funds to acquire the iconic colonial painting by John Glover, *Mount Wellington and Hobart Town from Kangaroo Point*. In excess of \$700,000 has been raised to date. A review of the Foundation's operations has been undertaken with an aim to increase the benefits to donors and to broaden the Foundation's funding base. The appointment of Mr Ross Fouracre as Honorary Secretary has been a most positive development.

During the year museum staff published over 20 books and papers covering a range of scientific and artistic topics that reflected the diversity of research areas within the TMAG.

The Tasmanian Museum and Art Gallery participates in a number of national collection projects including Australian Museums On Line (AMOL), the Australian Virtual Herbarium Project (AVH) and the development of the on line zoological collections in Australian Museums Project (OZCAM).

Donations and acquisitions of objects have added significantly to collections at the museum, including a generous gift of an extensive representative collection of Chinese ceramics by Professor and Mrs Wong.

I would like to thank all staff and volunteers of the museum for their enthusiastic and positive support during this period of significant change.

I would also like to thank the Premier, Mr. Jim Bacon, as Minister for Tourism, Parks, Heritage and the Arts for his continued strong commitment to the museum and its programs.

Bill Bleathman
Director



Directorate

After a period of major change during 2001/2002, the past year has seen a shift in focus at the TMAG, resulting in the development and implementation of a clear strategic path for the future growth and advancement of the TMAG.

Following the appointment of Director, Bill Bleathman last year, two new positions were created to complete a new Directorate structure. Lesley Kirby was appointed to the position of Deputy Director – Public Programs and Operations, while Dr Andrew Rozefelds was appointed Deputy Director – Collections and Research. This new structure will enable a balanced approach to all aspects of TMAG's operations.

Departmental Initiatives

The newly formed Department of Tourism, Parks, Heritage and the Arts continues to provide opportunities which encourage the development of partnerships and collaborative projects between the various participating organisations.

During the year TMAG played a key role in initiating several of these collaborative projects including the development, in conjunction with the Royal Tasmanian Botanical Gardens and Parks and Heritage, of the *Macquarie Island* exhibition to celebrate the Tasmanian Mid Winter Festival. TMAG also worked in partnership with Arts@work and Federal Resorts to develop

the *Thylacine Editions* initiative, a project aimed at providing commercial opportunities for Tasmanian artists and craftspeople.

TMAG continues to work closely with other organisations including the Australian Antarctic Division, University of Tasmania, Department of Primary Industries, Water and Environment and others via research and professional collaborative projects.

TMAG Rosny

In an effort to ensure a safe and lasting repository for this unique cultural and natural heritage asset, a major initiative was undertaken during the qualifying period to purchase a new, purpose built, collections store to ensure the storage of the collections to international museums' standards. This initiative followed completion in 2002 of a conservation survey of the TMAG collections, the first undertaken for many years.

TMAG Rosny occupies the former Commonwealth Archives complex, providing over 7,000m² of collections storage, as well as conservation laboratories, integrated pest management facilities, appropriate storage systems, and staff accommodation.

A steering committee was set up in March 2003 to organise the development of the TMAG Rosny complex. To ensure the security of our collections a new security system was installed. Wireless telephone and wireless computer based systems have also been developed to ensure maximum flexibility at the new facility.

Once the basic fit out is completed our first collections will start to move across to Rosny in August 2003. Approximately 60% of the TMAG city site is currently used for collection storage. This movement of collections will free up space in the City site and provide better access to the Heritage buildings. Also with the Rosny development, for the first time in decades, the museum will now have space at the Rosny facility to provide storage facilities that meet international museum standards. The new facility enables an exciting opportunity for increased research capabilities and greater public access to the collections.



Above: Dr Andrew Rozefelds,
Deputy Director – Collections
and Research and Lesley Kirby,
Deputy Director – Public
Programs and Operations
Above left: TMAG Rosny



Above and below: views of TMAG
(photography Terence Bogue)
Top right: TMAG Colonial Gallery
Below: Coins from Numismatics
Collection

The Tasmanian Museum and Art Gallery is Tasmania's flagship natural and cultural heritage institution.

It is unique in that by the very nature of its collections it is the only institute in Tasmania to encompass all aspects of natural and cultural heritage within one attraction.

TMAG stimulates and educates Tasmanians and visitors to Tasmania, encouraging greater awareness and understanding of all aspects of Tasmania's natural environment and cultural heritage both in a local and global context. This is achieved by the diversity and quality of the exhibitions and public programs provided for visitors.

TMAG successfully embarked on an ambitious exhibition program throughout the year. In excess of 29 different in-house, touring and permanent exhibitions were undertaken as well as the provision of assistance for a range of community based exhibitions hosted by the Tasmanian Museum and Art Gallery.



Visitor Numbers

During the past year TMAG has enjoyed record visitor numbers, with in excess of 254,000 visitors experiencing the vibrant and diverse exhibition program offered. This represents an increase of 70,000 visitors when compared to the previous year.



Exhibition Program 2002/2003

Exhibitions – In House

Forest Beauties of the Beetle World: Part II – Splendour in Colour

A stunning exhibition showcasing hundreds of species of beetles collected by George Bornemissza.

Innovations Festival Display

In conjunction with the National Innovations Festival, TMAG celebrated Tasmanian inventor and innovator Eric Waterworth with a display of his best know inventions.

Art Exhibitions from the TMAG Art Collection

- William Charles Piguénit 1836-1914
– Exploration of Tasmanian Colonial Artist
- Contemporary Landscapes: The Tasmanian Connection
– Tasmanian Artists
- Where Have You Been? Australian Art 1980-2000
- Big Wood: Australian Sculpture of the 1970s and 1980s
- Vaults, Screens and Traceries: Australia abstract painting of the 1970s
- 70 years of Australian Art 1890-1960
- 20 Century Australian Art – various Australian Artists
- City of Hobart Art Prize
- Australian Paintings: 1900-1940s
- Australian Paintings from the 1980s and 1990s
- British and European Art
– International Art from the TMAG collection



Decorative Arts

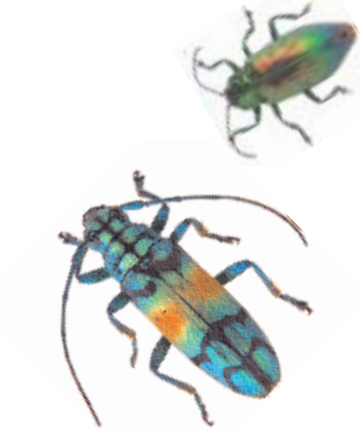
- Flotsam and Jetsam – showcasing small decorative arts collections
- Australian Studio Glass
– Examined the history of Australian studio glass
- Provisional Geometry – woven studio textiles
- Costume and Colour- the Peacock's Tail
– tracing the use of colour in clothing
- Earth and Fire – ceramics from the TMAG Collection

Exhibitions – Touring

Smugglers

This touring exhibition from the National Maritime Museum was well supported by the Australian Customs Caravan and The Quarantine Service.

Above: W C Piguénit [1836-1914]
Lake St. Clair, the Source of the
River Derwent, Tasmania 1887
Below: Beetles from Bornemissza
Beetle collection





Above: (detail) Sidney Nolan 'Ned Kelly Series' Collection: NGA
Above right: watercolour by Celia Rosser; The Banksias exhibition and Penguin photograph by Wayne Papps, Visualis Antarctica exhibition
Below right: giant squid on display
Below: Macquarie Island exhibition



BG Wildlife International

An annual event, this nature based photographic exhibition captures wildlife from around the world.

Virtualis Antarctica

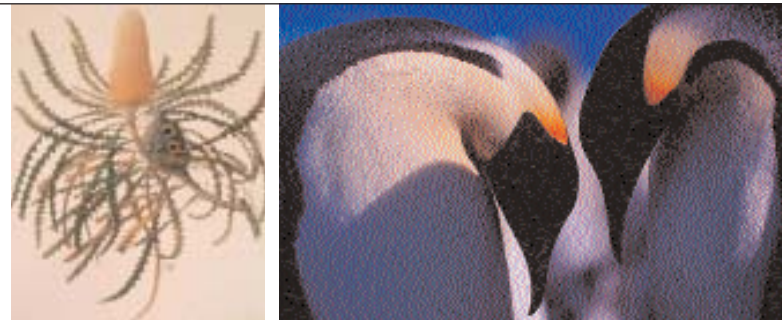
Celebrating the Tasmanian Mid Winter Festival this Antarctic photography exhibition captured the grandeur and spectacle of this frozen continent through the lens of Tasmanian photographer Wayne Papps.

Sidney Nolan Ned Kelly Series

In celebration of the 20th anniversary of the National Gallery of Australia, the *Out and About* initiative was created where major works were toured to twenty venues Australia wide. TMAG was fortunate to host the iconic Ned Kelly collection.

Gwen Leitch Harris Survey Exhibition

The Gwen Leitch Harris Survey Exhibition celebrated the work of this Tasmanian born artist. It contained oil paintings and pastels from a career spanning nearly 50 years.



From Face to Face: Portraits of David Moore

This was an exhibition of portrait photography by one of Australia's most significant twentieth-century photographers, David Moore.

The Banksias

The major component of this exciting mixed media exhibition was the water colours by Celia Rosser from the Monash University collection. Also included were woven textiles, and several banksia specimens from the TMAG Herbarium collection. These specimens included banksia collected at Adventure Bay, Bruny Island, during Captain Cook's last voyage.

Rings of History Contemporary Craft from Historical Timbers

This was an exhibition of stunning timber art works developed from the famous Dadswell timber specimen collection.

Women with Wings

The contribution of Australian Women Pilots in a range of spheres of aviation was explored in this exhibition.

Courtyard Displays

Giant Squid

Approximately 3,500 people viewed the Giant Squid specimen displayed in the Museum Courtyard. Zoology staff were in attendance to answer questions and provide information on the species.



Sunfish in the Courtyard

Approximately 2,800 visitors came to view a giant sunfish specimen which had washed up on a local beach. Zoology staff displayed the specimen in the Museum Courtyard.

Exhibitions – TMAG National and International Touring

Creating a Gothic Paradise: Pugin at the Antipodes

During the year period TMAG developed and produced the major national touring exhibition *Creating a Gothic Paradise: Pugin at the Antipodes* which explored the extraordinary life and work of 19th century designer and architect Augustus Welby Northmore Pugin. This remarkable exhibition, containing over 250 religious objects ranging from golden chalices and altar ware through to exquisite silk vestment robes and stained glass, toured nationally to great acclaim.

Breaking the Ice: Antarctic Watercolours and Etchings by Jörg Schmeisser

An international touring exhibition developed by TMAG and the artist, *Breaking the Ice*, comprised some 40 recent works including field journals, watercolours and mixed media works on paper, etchings and inkjet prints

developed from the artist's 1998 journey south under the auspices of the Australian Antarctic Division Humanities Program. This exhibition travelled to Washington, Kyoto, Bonn and Canberra.

France to Freycinet

This exhibition based on the explorer Baudin, was developed and sent to Océanopolis, in France. In December the display also toured to King Island, as part of the Baudin Anniversary Festival.

Collaborative Exhibitions

Macquarie Island

The history, flora and fauna of Macquarie Island was comprehensively explored in an exhibition to celebrate the Tasmanian Mid Winter Festival.

Community and Cultural Events

Gyuto Monks of Tibet – Jigsaw of Life

In May TMAG hosted a four day visit of the Gyuto Monks of Tibet for the third year in succession. 4,000 visitors enjoyed a comprehensive program of activities.

Wooden Boat Festival

In support of the Australian Wooden Boat Festival, TMAG hosted a display of nautical theme, quilts by the Channel Quilters and wooden dinghy in the Bond Store. This attracted approximately 4,800 people.

10 Days on the Island

TMAG provided a wide range of support to Tasmania's second *10 Days on the Island* arts and cultural festival. Activities based around this year's Antarctic theme included a collaborative program encompassing TMAG's *Breaking the Ice* exhibition, the Tasmanian Symphony Orchestra *Antarctica* Concert, and the Theatre Royal *Antarctic Film Festival*.



Left: sunfish on display in TMAG courtyard
Above: Gyuto Monks of Tibet
Below: Island Editions merchandise





Top: TMAG Director, Bill Bleathman (right) with artist Jörg Schmeisser (centre) and Prof Michael Stoddart AAD (left) at the opening of 'Breaking the Ice'
Above: National Science Week
Right: (detail) John Glover 'Mills Plains' travelling in the John Glover and the Colonial Picturesque national touring exhibition
Below: Thylacine Editions



Estia Greek Festival

TMAG actively encourages participation in its programs from all sections of the community and this year supported the Greek community's *Estia Festival* by providing an exhibit of Greek cultural artefacts and contemporary design objects. A Greek interactive day was held on March 23 incorporating a range of children's activities including Greek dancing, Greek story telling, and museum tours with Greek interpreters, Greek tapestry workshop, alphabet and flag activities and traditional Greek costume.

Thylacine Editions

Premier, Jim Bacon, launched this joint initiative between TMAG, QVMAG, Federal Hotels and Resorts Group and Arts@work. *Thylacine Editions* was a competition aimed at providing commercial opportunities for Tasmanian artists and craftspeople by developing tourism retail merchandise based on the thylacine.

Hobart Summer Festival

An annual event, the Hobart Summer Festival celebrates the cultural diversity of Hobart and Tasmania by showcasing good food, wine, music, arts and performance. TMAG presented the exhibition *Breaking the Ice*, to reflect this year's Antarctic theme.

Antarctic Mid Winter Festival

A festival recognising Tasmania's strong Antarctic tradition is celebrated to coincide with the winter solstice. TMAG exhibitions to celebrate this important festival included *Macquarie Island* and *Virtualis Antarctica*.

National and International events celebrated included:

- International Threatened Species Day
- National Seniors' Week
- International Museums Day
- Earth Science Week

- National Science Week
- Adult Learning Week
- NAIDOC Week

Exhibition Planning

TMAG is currently developing two major exhibitions for 2003/2004.

John Glover and the Colonial Picturesque National Touring

An exhibition celebrating the works of colonial artist John Glover, credited with being the Father of Australian landscape painting. This comprehensive show draws on public and private collections in Australia and overseas and incorporates a number of rediscovered pictures which have come to light in recent years.

Bicentennial Exhibition

In celebration of the bicentennial of Tasmania's founding, the TMAG will produce the State's official Bicentennial Exhibition. Using the theme 'collect, preserve and treasure', the exhibition will examine how the collections of the TMAG reflect the last 200 years of Tasmanian history.



Display and Design Review

During the year a major review of the Display and Design department was undertaken. The key outcomes sought from the review were to enable TMAG to achieve the required outcomes in terms of its internal and external exhibition programs, to modify and add to its 'permanent' gallery exhibits to reflect the current intellectual direction of curators, and to enable targeted professional development of staff of the unit aligned to the key strategic directions of the TMAG.

In January 2003 staff and stakeholders were asked to provide submissions and the final outcomes paper was released and the recommendations implemented in July 2003. Major outcomes included a new name, a revised team structure, the development of a number of small specialist units responsible for various parts of exhibition development, the creation of a multi media unit and the development of policies and procedures relating to all aspects of exhibition development and production.

Exhibitions

The department was involved in the development and production of over 27 different exhibitions and displays throughout the year.



Publications

The department undertook the design and project management of a major publication, the internationally recognised *Creating a Gothic Paradise: Pugin at the Antipodes* exhibition catalogue.

Graphic Design

Design and production of a wide range of graphic material and signage for events, exhibitions and displays was undertaken by the department as well as external commissions for other government agencies and private sector clients.

Taxidermy and Preparatory Work

Taxidermy projects during the year included autopsies and preparation of sperm whale material; preparation for the vertebrate zoology collection and, for display purposes, of whole whales, whale jaws and a leopard seal. Mounted specimens were prepared for the loans collection and for the National Parks and Wildlife Service for education purposes. Planning and preparation was undertaken for an ambitious project to freeze and display a Giant Squid.

Preparatory work included construction of mannequins for the Costume Collection and a diorama, model and mounted specimens to assist with interpretation of the Thylacine.

Heritage Furniture Unit

The Heritage Furniture Unit continues to prosper with an increased workload as the result of a successful tender to refurbish several original Hobart trams for the Hobart City Council. It is envisaged that the trams will eventually be used as a tourist tramway around the Hobart waterfront.

Commissions were completed for in excess of 35 external clients including Government House, Parliament House, Anglesea Barracks, Port Arthur Historic Site, the Allport and Crowther collections, and St Lukes Church, Richmond.



Above: Creating a Gothic Paradise: Pugin at the Antipodes exhibition catalogue
Left: (detail) Jörg Schmeisser artwork from 'Breaking the Ice' exhibition
Below: 'Monstrance' AWN Pugin c1845-50





Above and above right: 'Whole of Government' display at Royal Hobart Show
Below: after John Gould [artist]
H C Richter [lithographer]
(Tasmanian Marsupial Wolf)
c1846 Below right: Preparator,
Brian Looker, conducting a
school visit

Assistance to External Stakeholders

Whole of Government display

The department was instrumental in the concept design and implementation of the State Government presence at agricultural shows at Burnie, Launceston and Hobart in September and October 2002.

External Consultancy

Graphic design and production of graphic material was undertaken for a number of clients including ATSIC, Office of Antarctic Affairs Mid-Winter Festival, Mercury Newspaper, Hobart City Council, State Government presentations at Wine Shows, Department of Economic Development, Threatened Species Unit, Nature Conservation Branch.

To recognise the joint purchase of the Thylacine rug by TMAG, QVMAG and Federal Hotels and Resorts a diorama and interpretation installation was constructed and installed at Strahan Village.

Visitor Services

Responsibilities of Visitor Services include education, special events, public relations, volunteer programs (including the general guide program), the Discovery Space, cultural tourism, management of loan programs, exhibition teams, providing specialist advice on management issues, general enquiries and students on work experience.

Teacher professional development seminars, University of Tasmania Bachelor of Teaching and Bachelor of Education forums were coordinated with UTAS staff.

Public Programs and Activities

Visitor Services continued to provide a valuable role in organising and providing a diverse range of public programs for all visitors to TMAG and in promoting exhibitions and special events to wide audiences within the community. Programs developed and implemented throughout the year included:



Top: Robbie Poynter,
Coordinator, Visitor Services.
Above: Kate Morris, Coordinator,
Visitor Services and
Laurie Bishop, FTMAG
Top left: Australian Antarctic
Division pod arrives in the
courtyard for the Macquarie
Island exhibition.



Education Programs

The TMAG Visitor Services staff provided a range of exciting and engaging education programs for students visiting the TMAG. Programs included:

A First Look

This popular program aims to introduce students to the fascinating world of art.

Step Back in Time

A history program looking at the first European settlement in Sullivan's Cove involving the use of the built environment, gallery displays, role play and drama.

Fonts to Franklin

A new school program developed in partnership with the Mercury Print Museum explores the origins of the Tasmanian Museum and Art Gallery, the nature of collecting etc.

Education Support Group

A new Education Support Group has been developed, coordinated by the Queen Victoria Museum and Art Gallery. Any group with an interest in education can join the regular meetings held around the State where issues of common interest are discussed. Visitor Services has supported and attended most of these meetings including one delivered by the Education Department on the newly developed Essential Learnings Curriculum.

School Holiday Programs

Every year the TMAG Visitor Services team develops and delivers a wide range of school holiday programs aimed at introducing children to the wonders of the collections. Activities ranging from hands on interactive Marine Touch Tanks to Indigenous Story Telling all allowed children an insight into the natural and cultural diversity around them.

Outreach Programs

TMAG is committed to making its collections accessible to the broadest audience possible. To this end, many outreach activities are undertaken each year. During the year these included around 1,700 public enquiries, 45 media interviews, and approximately 38 lectures, presentations and demonstrations for the public.

TMAG Volunteer Programs

TMAG acknowledges the valuable contribution made by TMAG volunteers in all aspects of TMAG operations. Without the support of this dedicated group of individuals, the TMAG would be unable to undertake the extensive range of services it currently provides.

Volunteer Museum Guides Program

The Volunteer Museum Guides continued to provide free guided tours of the museum collections for both the general public and organised groups. Tour participant numbers increased to approximately 1,000.



Top and above: 'Artists Live in the Gallery'
Right: Artist, Jeff Woodger, producing a study of W C Pigenit [1836-1914] *Lake St Clair, the Source of the River Derwent, Tasmania 1887*
Below: Beetles from Bornemissza Beetle collection



TMAG tours are now a part of the Wrest Point *Bus Tours for Seniors*. Participants receive a tour and refreshments from Café for \$5.00. Booked tours for special groups have also increased.

Volunteer Art Guides Program

The dedicated Volunteer Art Guides continued to provide visitors with an insight into both the permanent and travelling art exhibitions. During the year, 205 exhibition tours were conducted with 3,321 visitors participating. This was in addition to the regular monthly Colonial Gallery program.

Artists Live in the Gallery

This program, held the first Saturday of the month, provided the opportunity for visitors to interact with local artists working or providing talks live in the galleries. A diverse range of topics and techniques were covered including portraiture, woodcuts, wildlife photography, and pastels with 33 participating artists.

Hobart Gallery Guide Map

The Volunteer Art Guide group continued to produce the Hobart Gallery Guide Map which is published every three months and includes exhibition information from the major local galleries. The group wishes to acknowledge the role of the Hobart City Council in assisting with this publication by providing a Hobart City Council Cultural Grant to finance its continuation.

Volunteer Art Guides Acquisition Fund

This fund is supported by profits generated by the Hobart Gallery Guide Map and various Teachers' Preview Breakfasts operated by the Volunteer Art Guides group. The group recently purchased a Gwen Leitch Harris pastel of Mt Direction and a George Davis bird drawing was donated to the TMAG Collection.



Additional Activities

CONASTA – Australian Science Teachers Conference

This workshop explored the role of Natural History Museums in Science Education was held as an afternoon workshop with Roberta Poynter hosting teachers from mainland states.

Re-entry Forum

Staff attended a forum for Batchelor of Teaching Students to introduce or re-acquaint pre-service teachers with key contacts and education stakeholders in preparation for entry into the teaching service.

Student Work Placement

Visitor Services coordinated work placements for two school students and one VET student during the year.

Adult Education Courses

These courses have continued with afternoon taster sessions in Decorative Arts, Geology, Zoology, History, Indigenous Cultures and Art. A variety of activities were also presented to celebrate Seniors' Week and Adult Learners Week.

School Loan Service

Demand for loan specimens increased and its expansion has been made possible with the valued support of the Gallery Assistants. New specimens are

gradually being added to the collection. TMAG continued to be the agent for distributing the Australian War Memorial Boxes throughout Tasmania.

Teacher Breakfasts

These continue to be a successful means of previewing exhibitions with busy teachers. Breakfasts were held for the *Creating a Gothic Paradise: Pugin at the Antipodes*, *Breaking the Ice*, and *Sidney Nolan Ned Kelly Series* exhibitions.

Teacher Orientation

Important links have been established with staff and students at the University of Tasmania involved in teacher education and with the Tasmanian Educational Leaders Institute linking gallery education programs with the school curriculum.

Saturdays @ Two Series

The *Saturdays @ Two* program provided a live performance experience each Saturday of the month from 2-4pm. Activities offered include;

- *Artists Live in the Gallery* – local Tasmanian artists working within the gallery space
- *Museum Music* – live performances by a variety of Tasmanian musicians
- *Curatorially Speaking* – lectures, tours and displays provided by our curatorial staff
- *Blank and Free Poetry and Prose* – a program of readings in conjunction with Arts@work.

Friends of the TMAG

The Friends of the TMAG group celebrated its 21st birthday this year, and continue to provide a strong support base for the activities of the TMAG. A wide variety of social functions, presentations and trips were enjoyed throughout the year by many of its members. Fundraising efforts continued with a generous donation to the Glover Appeal, and the acquisition of several works for the collections.



Top left: Gyuto Monks of Tibet
Top: David Coleman, President Friends of TMAG with Elspeth Hope-Johnson and Andrew Rozefelds, Deputy Director TMAG at the Friends 21st birthday celebrations.
Above: Members of the Friends of TMAG at the Friends Christmas function in the courtyard



Above and right: views of TMAG galleries, front desk and bookshop



Gallery Assistants

The Gallery Assistants continued to undertake a wide range of duties including gallery security, customer service functions, visitor information provision, cleaning of galleries and buildings and assistance with the installation and dismantling of various exhibitions and displays.

TMAG Bookshop

A major retail initiative for the year was the development of the *TMAG Online Bookshop*. This new e-commerce facility allows visitors to the TMAG website to select and order online a wide range of regular TMAG merchandise lines, as well as products from the Australian Museum Shops catalogue.

Marketing and Promotion

The TMAG has enjoyed a heightened media profile over the last year as the result of a concerted multi-media promotional strategy.

Regular newspaper advertisements, direct mail outs, brochure distribution and radio and television coverage have all contributed to increased visitor numbers and improved participation rates.

TMAG has continued to support a wide range of community groups and organisations by providing a venue for various community based displays, functions and events.



The TMAG is a combined Museum, Art Gallery and Herbarium. It has the broadest collection range of any single institution in Australia and these collections span the arts, sciences, humanities and technology. The TMAG's role is to collect, conserve and interpret material evidence on the State's natural history and cultural heritage.

A core function of the TMAG is therefore the management, development and maintenance of its collections. This involves ongoing tasks such as the compilation of information on the 750,000 items in our collection. The collection is continually growing and additional items are collected, or obtained for the museum through donations, purchase, gifts and bequests. We are grateful for the ongoing support we have from the Tasmanian community.

These collections are used by visiting researchers, the general public, tertiary and high school students and colleagues and professionals from universities and other institutions.

The collections are used for developing our in-house displays and are also used for research by the curators in the TMAG. Loan of items in the collection can be requested by both interstate and overseas institutes for inclusion in exhibitions and for research purposes. The new TMAG Rosny facility will enable vastly improved access to the TMAG collections.



Left and above: Wongs' Collection





Above: William Adolphe Bouguereau
[Artist] Cupid and Psyche 1889
Below: (detail) Artist unknown
'The Thylacine'



While the core focus of the Senior Curator of Art has been the continuation of research for TMAG's upcoming major national touring exhibition *John Glover and the Colonial Picturesque*, the Art Department has continued to maintain a full exhibition schedule of in-house and travelling shows.

In addition to undertaking regular functions such as the care, preparation, registration and maintenance of art work, the department has completed a record number of loans to other institutions and provided assistance with an increasing number of enquiries and requests, all of which has resulted in a busy and successful year.

Collection Management

Comprehensive registration of new acquisitions is a vital function of the Art Department along with continuous upgrading and modification of information on the data base. Additional information has been entered on over 7,000 records. A significant number of these entries has been achieved through the dedicated assistance of volunteers who have worked over 830 hours.

Outreach Activities

Public Programs

An extensive exhibition program was undertaken this year, with 14 different exhibitions being presented. A total of 11 of these exhibitions were developed from within the TMAG collections, and a further three travelling exhibitions were curated.

Visitors

Assistance has been provided with 2,000 enquiries, 150 personal interviews and over 80 visitors to view art work. Email has resulted in an increased

number of members of the public seeking information relating to art and artists.

Three film and TV crews have visited to view works together with staff from 23 national and international galleries and institutions plus numerous researchers and students.

External Duties

Sue Backhouse was a Guest Curator for the ABC for their Arts Online Program *Out of Sight*. For inclusion in the program she chose a work to discuss by photographer, Anne Ferran.

Curators were invited to judge the *Central Highlands Acquisitive Art Awards*, the *Aboriginal Prison Art Awards* and the *City of Hobart Art Awards*.

Loans

Over sixty art works, have been loaned to thirteen art galleries and museums during the year, eleven of which travelled interstate.

Art Gallery of NSW

Exhibition: *Machine Organic: The Art of Robert Klippel*
(10 August – 13 October 2002)
AG3537

Robert Klippel (1920 – 2001)

Untitled No 414 1981

bronze sculpture

The Ian Potter Museum of Art, University of Melbourne

Exhibition: *Peter Kennedy: Selected Works 1970 to 2002*
(13 April – 30 June 2002)
AG7045

Peter Kennedy

NOWANDTHEN (Thursday 27 February, 1997) 1997 – 98

blue neon light mounted on craftwood and acrylic



National Gallery of Australia

Exhibition: *Seeing the Centre: The Art of Albert Namatjira* 1902 – 1959
NGA Travelling Exhibition (28 July 2002 – 2 November 2003)
AG1289
Albert Namatjira (1902-1959)
Landscape (Mount Hermannsburg) c1935
watercolour over pencil

Plimsoll Gallery, School of Art, Hobart

Exhibition : 'Wunderkammer 02' (28 August – 23 September 2002)
AG2767
Peter Dombrovskis
Alpine Stream in Mist, Mt Eliza 1975
cibachrome print

Ian Potter Museum, University of Melbourne

Exhibition: *Pat Brassington: Work in Progress #4*
(2 July – 26 September 2002)
Works by Pat Brassington provided include:

AG5691.1
From Memory : Au Rebours Series
silver gelatin photograph

AG5691.2
From Memory : Au Rebours Series
silver gelatin photograph

AG5691.3
From Memory : Au Rebours Series
silver gelatin photograph

Burnie Regional Art Gallery

Tasmanian Museum and Art Gallery Touring Exhibition:
Tasmania's Birdlife in Colour (8 October 2002 – 10 December 2002)
Susan Lester (b1956)
47 watercolours of Tasmanian Native Birds 1987-91

Allport Library and Museum of Fine Art

For Exhibition: *Summer Fantasy: the idyllic world of Curzona Allport*
9 November 2002 – 31 March 2003
AG3586
C L Allport (1860-949)
Autumn Leaves – design for a fan
watercolour on silk

Loans for travelling exhibition:

Gwen Leitch Harris Survey Exhibition: A Journey – 'home is where one starts from'. Toured to the Tasmanian Museum and Art Gallery, Burnie Regional Art Gallery and the Adelaide Central Gallery, Norwood (15 August 2002 – 19 March 2003)

Works by Gwen Leitch Harris provided included:

AG4290
Nude Figure 1982
pen on paper



Above: Sidney Nolan [Artist] Baobab tree, Central Australia 1950
Left: Offshore whaling with the 'Aladdin' and 'Jane' William Duke [Artist]
Below: 'Medusa', Colonial Gallery





Above left to right: Richard Read senior [Artist] Elizabeth Henrietta Macquarie (Mrs Lachlan Macquarie, nee Campbell) 1819 and Governor Lachlan Macquarie (1762-1824) 1819; Thomas James Lempriere [Artist] Mrs Elizabeth Charlotte Booth (nee Eagle) and Captain Charles O'Hara Booth c1834 Right: Benjamin Durerrau (Artist) 'The Conciliation' 1840



AG4262
Grey Nude 1979
pencil and pastel on paper

Moonah Art Centre

Survey Exhibition of the work of Edith Holmes (27 March – 10 April 2003)
Works by Edith Holmes provided included:

AG193
The Ballet Girl
oil on canvas on cardboard

AG3516
Fruit study
oil on canvas on cardboard

AG3536
Portrait of Mother, Mrs W N Holmes
oil on canvas on cardboard

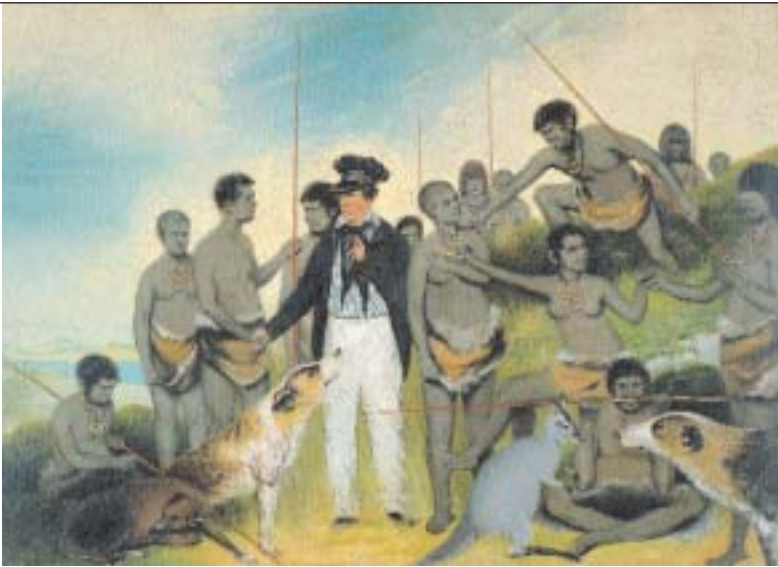
AG3577
Summer Holidays
oil on canvas laid onto card

AG4433
Zinc Works
oil on canvas on cardboard

AG5659
Gum Tree and Houses
oil on canvas

National Portrait Gallery

Exhibition in three refurbished gallery spaces, Old Parliament House, Canberra (30 March 2003 – 1 March 2004)
AG240
Mary Edwards (1894 – 1988)
Dame Enid Lyons 1945
oil on canvas



Museum of Sydney

Exhibition: *India, China, Australia: Trade and Society 1788-1850* (2 May – 22 August 2003)
Jacob Janssen (1779 – 1856)
(Campbell's Wharf.) Sydney Cove, (Fort Denison in the background)
oil on canvas

National Gallery of Victoria

Exhibition: *Sidney Nolan: Desert and Drought* (13 June – 24 August 2003)
AG453
Sidney Nolan (1917 – 1992)
Baobab tree, Central Australia 1950
oil on hardboard

Queen Victoria Museum and Art Gallery

Exhibition to celebrate the launch of *The Usefulness of John West* by Patricia Ratcliff (10 June 2003 – 18 July 2003)
AG305
attributed to Robert Dowling (1827 – 1886)
Reverend John West
oil on canvas



Collection Management

Much of the focus in the department this year has been on the preparation of the various collections in preparation for moving them to the new TMAG Rosny storage facility. This preparation has included continued detailed registration including digital imaging for databases, re packing and storage of the costume and textile collections, and the historical and studio crafts collections.

Major Donation

The *Wongs' Collection* is a donation from the collections of Nancy and Dr. Shiu Hon Wong. It comprises one hundred and seventeen items; most are ceramics dating from the Neolithic period through to the late twentieth century. Other items include wood carvings from the Qing (Ching) dynasty through to the early republic period, two bronze pieces and fifteen exquisite snuff bottles.



Top: Costume from Decorative Arts Collection
Above and below: (details) Flotsam and Jetsam exhibition
Above left: Tea Caddy c1800



This collection has all the advantages of the donors' enthusiasm, knowledge and expertise. Through these objects we can take a journey through the long history of China with its waxing and waning dynasties and the confluence of ideas through culture, trade and invasion that make up that fascinating history.

Outreach Activities

Visitors

Visit by the Hobart Embroiderer's group to view the quilt collection.

External Duties

Commemorative Spade (Sorrell to Bellerive Railway) displayed at a meeting of the Bellerive Historical Society.

Presentations

Curator made a presentation and provided a preview of the *Wongs' Collection* for the AGM of the Friends of TMAG.

A presentation was made for Art Guides relating to the *Flotsam and Jetsam* exhibition.

Loans

- These were made to the Historic Houses Trust of NSW: Australia, India, China; and the National Museum of Australia, Eternity Gallery
- cane chair (S1007)
 - pair of colonial elbow chairs (P1978.283.1 and 2)
 - campaign table (P1994.193)
 - Lady Franklin Carrying Chair (P124)

Professional Development

Curator, Peter Hughes, attended the Leading Voices Forum (contemporary art and design).



Above: Governor Arthur's Proclamation; illustrated noticeboard to the Tasmanian Aborigines
Above right: child's pedal horse and trap 1870
Below right: convict uniform and military uniform, Convict Gallery

Collection Management

Preparations for the movement of collections to the new TMAG Rosny complex are underway, with the continued upgrading of detailed registration and re packing and storage of various collections.

Prior to the Senior Curator of History returning from maternity leave in January 2003, Jo Huxley maintained the day to day operations of the department, handling enquiries and issues relating to collections.

Gillian Winter was appointed as Acting Senior Curator of History in August 2002 for a period of four months.

The Senior Curator of History has continued to undertake ongoing research on a wide variety of items being prepared for the *Bicentennial Exhibition*.

Donations

Several interesting donations were received during the year including the donation of Confectionery material relating to Edmund James Lewis, (1866-1935) Pastry cook at Cripps Bakery, Battery Point and Confectioner at Benjamin's Confectionery in Liverpool Street. Many of the items are handmade.

Numismatics received an interesting collection of appeal badges, the first of the paper and pin variety in the collection.

Reaching a Milestone

Roger McNeice completed 20 years voluntary service for the History Department including his time as Honorary Curator of Numismatics.

Outreach Activities

Visitors

Numerous visitors viewed the collections for research purposes including staff from Clarence Council, Tasmanian Cricket Museum, Port Arthur



Historic Site, Tasmanian Heritage Council, Royal Hobart Hospital, Wireless Institute of Australia and Parliament House.

Film Crews

The ABC filmed two segments for their second series Treasure Hunt with Alan Carter based on the TMAG scrimshaw and convict collections.

Loans

Loans to a number of other institutions were renewed during the year including the National Museum of Australia, Maritime Museum of Tasmania, Mercury Print Museum, Military Museum of Tasmania, Penitentiary Chapel Historic Site and the Queen Victoria Museum and Art Gallery.

New loans were made to the Australian National Maritime Museum of Antarctic material relating to the *SSY Discovery* voyage, and to the Historic Houses Trust of NSW, a bust of Dumont D'Urville.

Presentations

Jo Huxley, History Assistant, coordinated a public lecture by Dr John Carter *James Aitchison: Rebel without a Cause?* This was held in January 2003, with approximately 30 participants attending.

Senior Curator, Elspeth Wishart, presented two gallery talks in the *Macquarie Island* exhibition relating to her Antarctic experiences.

Professional Development

The Senior Curator attended a number of conferences and workshops including:

- Beyond Amnesia Workshops at the Cascades Female Factory
- 'Escape' International Centre for Convict Studies conference
- John Lees Forum at the University of Tasmania – *Living History*



Left: items from Numismatics Collection Above: Scrimshaw

- Today – *The legacy of the Past*
- Integrated Pest Management

The Senior Curator undertook appointments with the following bodies;

- National Trust Furnishings Advisory Committee
- Cultural Heritage Practitioners Group
- Tasmanian Heritage Council – Movable Cultural Heritage Sub Committee
- Small Museums Grants Assessment Panel – Tasmanian Arts Advisory Board
- Tasmanian Maritime Museum Maritime Heritage forum
- Sarah Island Conservation Management Plan consultative group.





Above: view of the Colonial Gallery
Below: John Glover (Artist)
'Cawood on the Ouse River' 1835



Collection Management

During the year the Conservation Department was staffed by three fulltime conservators and one casual conservator. The Conservation Department spent a considerable amount of time preparing over two hundred items for *Creating a Gothic Paradise – Pugin at the Antipodes*, and activities associated with the tour to Bendigo, Canberra and Sydney.

Other major projects included planning for the relocation of the collection to the Rosny site and preparation for the Glover exhibition for late 2003.

Erica Burgess (Paintings Conservator) worked on paintings in the collection by John Glover. Erica also completed a paper for inclusion in the Glover catalogue and co-wrote a paper on the conservation treatment of *Mount Wellington and Hobart Town from Kangaroo Point*.

Ray Prince (Framer) restored the frames for two large watercolours by John Glover. Ray also constructed seven frames for works in the collection, most significantly a large gilded period frame for Albert Hanson's *Narrabeen Lagoon*.

Due to a temporary loss of access to the Paper Laboratory Cobus van Breda (Paper Conservator) was unable to undertake any major treatments. Work was focused on the Pugin exhibition, the relocation of the collection to Rosny and, with Ray Prince, the preparation of sixty-eight works on paper for the *Jorg Schmeisser: Breaking the Ice* exhibition.



Outreach Activities

Assistance to External Stakeholders

- Work was undertaken on six paintings belonging to other institutions/individuals.
- External framing commissions were completed for the Allport Museum of Fine Art, the National Trust and Narryna Heritage Museum
- Conservation was undertaken on four items from other institutions/individuals.

Condition reporting of three hundred works took place during 2002/3, comprising six visiting exhibitions. Sixty-five works were prepared for loan to other institutions.

Workshops

Two workshops were organised: an Integrated Pest Management workshop co-funded by Arts Tasmania which attracted twenty-two participants from around the state; and a colour photograph and digital print conservation workshop which attracted eleven participants.

Professional Development

Cobus van Breda remained President, Tasmanian branch of the AICCM, while Erica Burgess remained Secretary. The Tasmanian branch of the AICCM has 28 eight members, including conservators and collection managers in regional institutions and provides an ideal venue to discuss professional issues.

Staff attended a number of conferences and workshops including:

- AICCM Conference in Sydney.
- National Training Summit in Canberra.
- Getty sponsored photographic conservation workshop at the NGV

Cobus van Breda is currently undertaking a graduate diploma in photographic conservation through the University of Canberra.

Collection Management

The function of the Information Services department is to provide information management support for the staff of the TMAG and facilitate access for the public to the TMAG's information. Information Services provides this support and access through managing the information technology, library, photography, photographic services and webpage. It holds the Photograph Collection, the Document Collection, the Library and the TMAG archives.

Information Management

The growing number of requests for use of TMAG material for projects both internal and external to the TMAG continues to be the greatest information challenge. The increased interest in information generally in our society and the expectation of being able to readily access that information has resulted in increased demand on Information Services.

The TMAG has increased the public access to its information through the expansion of the webpage services and continues the work of massaging data to conform to standard data formats, authority lists and transfer standards in all disciplines. 17,000 images and 190,000 records are now available online.

The TMAG is a participant in national collection projects. It continues to participate in the Australian Museums On-Line (AMOL) project, the Australian Virtual Herbarium (AVH) and the development of the Online Zoological Collections in Australian Museums (OZCAM) project.

Network

During 2002/2003 the TMAG transferred from the Department of State Development (DSD) to the Department of Tourism, Parks, Heritage and the Arts (DTPHA). The Information Technology section of the DTPHA provides the network access, electronic mail services and supports the TMAG internal network including computer hardware. TMAG Information Services

provides daily operational support to the TMAG staff, and technical advice and design for research, documentation, special projects, affiliated bodies and the TMAG Bookshop.

The TMAG Rosny site acquired during this financial year has been fitted with a wireless network to facilitate the use of technology in curatorial work and storage management. Access to the network and collection databases is available through out the building and is linked to the TMAG City site.

Documentation

Cataloguing documentation standards for the collections are established, in consultation with the curatorial staff, within the computer based cataloguing system, which is designed, maintained and managed within Information Services. The TMAG collections hold about 750,000 items with 300,000 digital catalogue records and 23,000 associated digital images.

The TMAG maintains an internally developed cross-platform, multi-discipline cataloguing system. This has been developed in FileMaker Pro and as a model for producing specifications for a larger system. FileMaker Pro has proved to be robust and easy to manage. It has allowed the flexibility needed to accommodate the various discipline standards, personal preferences of individual curators and the wide range in quality of existing cataloguing records.

Photograph Collection

The Photograph Collection holds over 100,000 photographs and includes photographs as objects of historical interest and the TMAG's archival and record photographs. It has significant holdings of 19th and early 20th century photography including daguerreotypes, stenotypes and ambrotypes, early 'wilderness' images, streetscapes and portraits. It has a growing collection of digital images. During this period about 1300 photographs have been catalogued with a particular emphasis on Antarctic material.



Above: A H Boyd (photographer);
(convict) James Glenn 1874
Below: J W Newland (photographer)
'Murray Street' 1848





Above and right: Henry Hunter plans from the Document Collection
Below: George Arthur Walter and Mary Ann, his wife, Tasmanian Aborigines, Oyster Cove.
Photographer: J W Beattie after Bishop F R Nixon



Document Collection and TMAG Archives

The Document Collection is a centralised collection, which holds material on paper other than works of art. It holds about 14,000 items and includes the special book collection, the ‘ephemera’ collection, TMAG archives and significant special collections such as the Communications Collection of material relating to postal, telegraph and telephone services in Tasmania and the Henry Hunter Collection of architectural drawings.

Library Services

The Library supports the information requirements of staff for their work and research. It holds 15,000 monographs and 12,000 journal volumes related to Museums and collection management, humanities and natural history. Access to its resources for TMAG volunteers, small museums and interested public is available through the librarian.

Photographer

The photographer provides photographic documentation of the TMAG collection items, conservation, public programs and research and supplies photographic reproductions for the public.

Photographic Services

Photographic Services is run in conjunction with the Photograph Collection and deals with requests for photographs and photographic reproductions for all TMAG collections. It is offered as a service to the general public, researchers and publishers and provides increased access to collection material.

Document and Ephemera Collection Acquisitions

Tasmanian tourist accommodation guides and brochures
Presented by Mr Kevin Pullen



Tasmanian Tourist guidebook: Union Steamship company. 1898.
Presented by Bev Gigney

Note book journal:
Dec 9th / 1909 Note book Voyage from Stoke-on-Trent to Hobart Tasmania on the R.M.S. Arawa (Twin screws) (Steel) 9372 tons 5000HP 460 ft long
Commander W. Clayton
Presented by Mrs Gladys Kelly

Rough sketch plans of the Mount Field West and Broad River Valley area showing location of glacial remains by A. N. Lewis, 1921
Presented by Ski Club of Tasmania

TMAG booklet: Tasmanian History: An illustrated history of the discoverers of Tasmania, and other notable people, 1959
Presented by Mr Chris Girvan

Food labels and retail bag
Presented by Mr Keith Vallance



Metric Conversion Board newsletter
Presented by State Library of Tasmania (Karen Marriott)

Bound volumes of ‘The Hobart Town Gazette’
Presented by Commonwealth Archives

Almanacs: Part set of ‘The Red Book’
Presented by Commonwealth Archives

Collection of cookery books, 1935-1950
Presented by Mrs. G. Worladge

Copy of will: Last Will of Geo Frederick Read Esq Dated 8th April 1858
Presented by Mrs Audrey Gawthorpe

Merit certificate: 1880 1881 Melbourne Exhibition First Order of merit:
Awarded to A. G. Moir Hobart, Tasmania a silver medal for lead shot
Presented by National Parks and Wildlife Service



Above: Native Tiger of Tasmania shot by Weaver 1869
Left: Duke & Duchess of Cornwall and York at Government House, Hobart 1901
Below: A Propsting [photographer] Looking up Murray St Indian troops, mounted between Collins and Liverpool Street



Award certificate: Sydney International Exhibition 1879: Awarded to James G. Moir Queenboro’ Glens, Tasmania for assorted lead shot, first degree of merit
Presented by National Parks and Wildlife Service

Document in bark frame
Presented by National Parks and Wildlife Service

Field guide: National Parks and Wildlife Service: Fire control guidelines, 1990s
Presented by Chris Arthur

Photograph Collection Acquisitions

Photograph prints (37) Hobart and Tasmania
Presented by Ms Julia Clark

Digital scans: Cath Palmer and Barry Dallas, receiving a certificates from the Lord Mayor of Hobart, Robert Valentine, for services as volunteers at the Tasmanian Museum and Art Gallery

Purchased

Digital scans: Images related to Antarctic expedition of 1911-1914.
Copy from item on loan from Mr Peter Goddard

Digital scans: Forsyth family photographs; Printed Testimonial to Charlotte S Mitchell from Free Church Training College, Edinburgh 1886
Copy from item on loan from Mrs Isa Horner (nee Mitchell)

Photograph: Rotunda, St Davids Park under snow: Julian Halls (photographer);
Presented by Mr Julian Halls, 2002.

Photographs: Griffiths Modern Bakery, 217 Macquarie Street, Hobart: J J N Barnett (photographer); Moody’s Bakery
Presented by Ms Kerry Griffiths

Digital images: Willing family out on the awning above their butcher shop at 101 Liverpool Street and Criterion Street corner) Shows L to R Mrs Wright, Crisp, Willing, B Abraham, M Willing
Copy from item on loan from Odette Calvert

Photograph: Mrs A P Howell: Wherrett Bros and Co (Photographer)
Presented by Mrs Junetta Green



Above: Brunton & Easton (photographer) Portrait of two unknown girls. Right: Thomas Skelton Glaister (photo-grapher); Professor John Smith (1821-1885), First professor of Chemistry and Experimental Philosophy, University of Sydney 1855c (Stereo daguerreo-type) Below: John Watt Beattie after Bishop Francis Russell Nixon (Photographer); Patty, Flora, and Wapperty (Front row) Caroline, Truganini, Tasmanian Aborigines, Oyster Cove, Beattie, Hobart 1858



Studio portraits of Klara Bornett winner of a participants medal for diving in the Olympic Games in Austria. Medals held at the TMAG
Presented by Mrs Sandy Graetzer

Framed photographs: 3275 Pt H M Carroll (brother of T R Carroll). For King and Country. Enlisted 2.8.15 Sailed 13.12.15 Killed in action France 22.8.16 12th Battallion. 3rd Brigade AIF: The Universal Photographing Coy (Photographer)
Presented by Mr John Sullivan, 2002.

Photograph: The Settlement Maria Island 1924-1925: W H Pridmore (Framer)
Presented by Mr Mike Nash, National Parks and Wildlife (Cultural Heritage Branch)

Digial scans: Collection of images of south West Tasmania taken: Jim Poynter (photographer)
Copy from item on loan from Mr Jim Poynter, 2002.

Digital scans: Album of photographs taken while Ken Hudspeth was serving with a submarine crew on board the H.M.S. Bonaventure before Operation 'Source' Sept 1943 World War Two; X-craft; XE Control Room; Scotland; Christmas card (undated? late 1940s-1950s, from Don and Eve Cameron showing X-Craft and unidentified officer. (Don Cameron, V.C., Commander X6, Tirpitz raid): Ken Hudspeth DSC (photographer);
Copy from item on loan from Mrs Audrey Hudspeth

Photograph: Joseph Moir (1804 – 1874) Built this Shot Tower – 1870: C H Saunders (Framer)
Presented by Mike Nash, National Parks and Wildlife (Cultural Heritage Branch)

Digital scan: Charles and Charlotte Groves: Burlington Studios (photographer)
Copy from item on loan from Mr Bryan Power

Set of photographs by Samuel Clifford
Presented by Mr Terry Grabsch

Digital scan: Wedding portrait of Esther and Ray Clark. E J Lewis gave bride away: Brunton and Easton (photographer)
Copy from item on loan from Mrs Chris Nelan

Photographs: (Mt Lyell Mine) The Smelters Queenstown, West Coast of Tasmania; Queenstown
Presented by Jocelyn Grant, Hon President, Queenscliffe Historical Museum Inc

Photographs: Hobart, Sandy Bay, Bellerive, Mt Wellington: 1930s
Presented by Peggy Hoskin, 2003.

Photograph: Dr Chas. Hodgkinson Patron first founder of Photographic Society: H C Mathers, Southern Tasmanian Photographic Society (photographer)
Presented by Mrs Pat Warren

Collection of colour slides and colour prints covering the research on the imported bumblebee undertaken by Roger Buttermore and Kaye Hergstrom 1995 to 2002
Collected by Roger Buttermore and Kay Hergstrom

Digital scan: Jane Harriette Ann Simson Xmas 1887
Copy from item on loan from Mr David Simson



Collection Management

The year 2002/2003 can be seen as a major stepping stone to the future direction that the Indigenous Cultures Department will take in years to come. During this period a number of major initiatives have been developed and implemented by the TMAG.

Trainee Curator

The appointment of a Trainee Curator, Zoe Rimmer, in June 2003 represents a major commitment to the future role of this important cultural collection. This appointment was made possible with the assistance of the Office of Aboriginal Affairs.

Keeping Place

The ongoing development of a TMAG Aboriginal Advisory Committee and the provision of a secure Keeping Place for all Tasmanian Aboriginal material is seen as a very positive step by Tasmanian Aboriginal Community members.



RICP Program

The Return of Indigenous Cultural Property (RICP Program) continues to be a major ongoing project. Technical Assistant, Debby Robinson, and Honorary Curator, Kim Akerman, are working on this important project, the aim of which is the return of Aboriginal ancestral remains and secret sacred objects to their original owners.

The key objectives of the program are:

1. identification of origins of all ancestral remains and secret sacred objects;
2. notification to all communities who have ancestral remains and secret sacred objects; and
3. arrangement for repatriation where and when it is wanted.

To date all secret/sacred material held by TMAG has been identified and this material is now ready to be de-accessioned and returned to Aboriginal communities around Australia. Work, including development of a database, continues on the ancestral remains.

Database

During the course of the year a number of changes were made to the Indigenous Cultures database. The changes were aimed at improving accessibility, and a concerted effort was made to include on the database the storage locations of some 2,000 artefacts. This undertaking included correct identification of objects in the collection and cross-referencing them to the database with other data from the records.

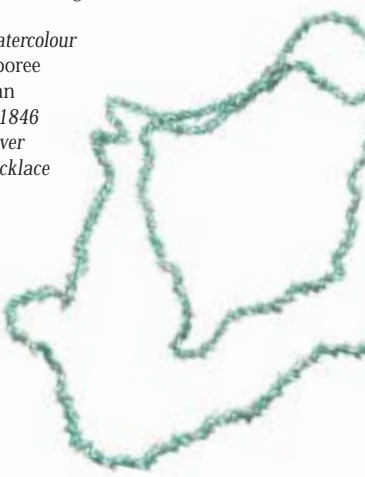
Outreach Programs

Community Consultation

Community consultations were held in Launceston, Burnie, Smithton and Devonport to discuss the concept of a Keeping Place at the TMAG and the redevelopment of the existing Tasmanian Aboriginal Gallery.



Top: Thomas Bock [artist] Mathinna 1842
Above: Tasmanian Aboriginal grinding stones
Left: (detail) Watercolour painting, Corroboree of Natives in Van Diemens Land 1846 [artist] John Glover
Below: Shell Necklace





Above: Contemporary handmade Tasmanian Aboriginal baskets, (detail) Shell necklace
Right: Robert Dowling (artistmaker), H Frith (photographer) 'Aborigines of Tasmania from the original painting by R Dowling (1860 photograph taken) Below: Thomas Bock (artist) 'Manalargenna, a Chief of the eastern coast of Van Diemen;s Land' 1837

Visitors

During the course of the year a large number of people have visited the Indigenous Cultures section. The purpose of these visits ranged from enquiries relating to specific artefacts to general information on the history of the Tasmanian Aboriginal people.

Presentations

Curator, Tony Brown, addressed a meeting of Tasmanian Education Officers in Devonport to discuss the correct protocols related to addressing Tasmanian Aboriginal issues and his role as Indigenous Curator.

Donations

The Indigenous Cultures Department has acquired a large collection of indigenous material from the Port Arthur Historic Management Authority. This material formerly comprised part of the Radcliffe Collection. These objects, of which there are a total of 204, are primarily from the Pacific region including Melanesia, Polynesia and Micronesia, but include a small collection of mainland Australian artefacts.

Other acquisitions include Tasmanian Aboriginal stone artefacts, one large Tongan tarpa cloth and a number of tourism related souvenir objects from PNG and surrounding islands.

A collection of 206 stone artefacts were also donated during the year by Janet Middleton, TMAG.



Research

Planning and research continued for the redevelopment of the Tasmanian Aboriginal Gallery, as well as research and collection of material for the NAIDOC *Times of Reflection* exhibition.

Work continued with the Aboriginal Arts Committee of Arts Tasmania to put together a protocols document for Tasmanian Aboriginal Art, Culture and Heritage content in Arts related projects.

Community consultation was undertaken regarding the building of a number of bark objects for the Tasmanian Aboriginal Gallery display. These objects include a bark canoe, different types of shelters and a bark tomb. Related research on the building of these objects was also begun.

A catalogue is currently being developed for Tasmanian Aboriginal shell necklaces held in Australian and overseas institutions.

Professional Development

The Curator attended two-day *Down the Track* career pathways camp to help Aboriginal youth gain employment in both State and Private sectors. Camp was hosted by Office of Aboriginal Affairs, at Bridport.

In addition, the Curator attended a two-day workshop at The National Museum, Canberra, on the repatriation of ancestral remains. The workshop examined the repatriation of ancestral remains from both overseas and Australian institutions to Aboriginal communities, as well as the return of remains from Australian institutions to Indigenous peoples worldwide.

A Repatriation/Roving Curator Forum in Melbourne explored similar issues of returning ancestral remains to the appropriate communities, and the development of Keeping Places for secret sacred objects. The Curator made a presentation regarding TMAG's progress to date with the RICP program.

The Curator attended two round table forums in Hobart and Launceston that dealt with the Keith Windschuttle publication on Tasmanian Aboriginal History, *The Fabrication of Aboriginal History*.

Collection Management

Priorities in curation during the year were again defined according to the needs of the AVH project. As at June 30, the vascular plant and algae database held 105468 records, the lichen database held 16,514 records, and the bryophyte and fungi database contained 9,347 records. A major new initiative to photograph all the Type specimens of vascular plants has commenced. The intention is to make the images generally accessible via the Web, linked to the Type database.

Australia's Virtual Herbarium

Australia's Virtual Herbarium (AVH) is a collaborative project being undertaken by all the Commonwealth, State and Territory herbaria. It aims to make available on-line the wealth of information associated with scientific plant specimens held in Australian herbaria. Over six million specimens are involved. The second year of the AVH project was completed at the end of June 2003.

Taxonomic Studies on Lichens

Gintaras Kantvilas continued his studies on lichens. A major synopsis of the genus *Siphula* worldwide was published giving detailed accounts of all 23 accepted species.

Gintaras Kantvilas and Jean Jarman continue their project *Ecological Studies of Lichens and Bryophytes at the Warra Long-Term Ecological Monitoring Site*. This study uses lichens and bryophytes as monitors of the effects of different silvicultural treatments.

Studies on Vascular Species

Andrew Rozefelds described a new species for both *Craspedia* and *Ozothamnus*, and published research on *Sphaerolobium*, *Cunoniaceae*, *Nothofagus*, and fossil *Elaeocarpus*. Alan Gray and Andrew Rozefelds continue to revise the New Holland daisy genus *Vittadinia* and have identified an undescribed species.

Marco Duretto, with Paul Wilson (Western Australian Herbarium), have virtually completed the *Flora of Australia* account of *Boronia*.

Outreach Activities

The Herbarium maintains its key role as a source of botanical advice and information to individuals, government bodies, scientific and educational institutions, and other organisations.

Open Day

A Herbarium Open Day was held on 21 October in conjunction with *Weedbusters Week*. Staff and volunteers prepared a number of displays and a Weed Walk was given and participants received a pamphlet with details on the most common weeds occurring at the sites visited.

Visitors

More than 1,000 visitors used Herbarium facilities during the year. Enquiries covered a broad range of subjects, from history and ecology to those more obviously associated with herbaria, such as taxonomy, identification and curation. Several groups toured the Herbarium: including the Camellia Society of Tasmania Inc., the Taroona Garden Forum, and the Tasmanian Aboriginal Land Council, as well as informal groups of students and plant enthusiasts.

Media

Matthew Baker was interviewed on the ABC's *Country Hour* regarding some recent weed incursions, and the Herbarium's *Weedbuster Open Day* also received considerable exposure.

Plant Identification and Information Services

Approximately 1,000 specimens were identified by Herbarium staff for 157 individual or institutional clients.

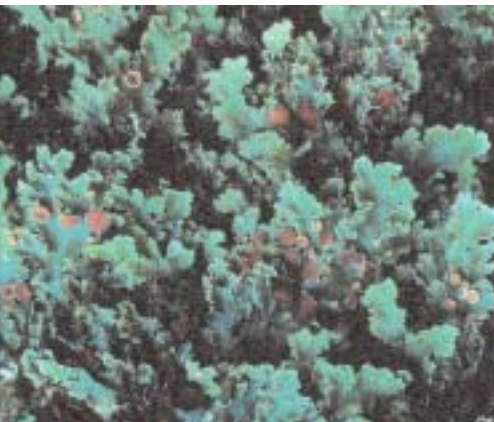


Above: *Banksia marginata* collected on Captain Cook's third voyage at Adventure Bay, Bruny Island. Below: native heath





Top: *Banksia melaleuca*
Below: *Foliaceous lichen*



Weeds

The Herbarium's critical role in Tasmania's *Weed Alert Programme*, identifying specimens of new incursions and contributing advice on weed management and control, has expanded with the appointment of Matthew Baker as Graduate Weed Taxonomist.

Loans

A major component of the Herbarium's loans programme services mainland and international institutions is to facilitate the study of the Tasmanian flora by scientists outside Tasmania. At present, approximately 17,180 specimens are on loan to more than 40 institutions throughout the world.

External Duties

Herbarium staff undertook appointments on the following bodies;
Threatened Species Scientific Advisory Committee.
Forest Practices Tribunal
Council of the International Association for Lichenology
Council of Heads of Australian Herbaria
School of Plant Science, University of Tasmania.
Royal Society of Tasmania.
Bryology Interest Group (BIG) in Hobart.
Winifred Curtis Scamander Reserve.
Tasmanian Flora Network.
Australian Systematic Botany Society
School of Botany, University of Melbourne
Australian Systematic Botany Society
Australasian Mycological Society

Professional Development

Attendance at conferences and meetings provided the opportunity to profile the scientific research being undertaken in Tasmania to national and international audiences.

In July, Lyn Cave and Kim Hill visited the National Herbarium of Victoria, Melbourne, familiarising themselves with a wide range of administrative,

curatorial and AVH procedures. In June, Lyn Cave attended a conference for AVH project managers held at the National Herbarium of New South Wales, Sydney. This was the first time such a gathering had been held, and provided a much-needed opportunity for delegates to compare goals and working methods.

In October, Gintaras Kantvilas attended the annual meeting of Council of Heads of Australian Herbaria in Armidale, New South Wales. In November, Gintaras spent four weeks at the Royal Botanic Gardens, Edinburgh, UK, working with Dr Brian Coppins on Tasmanian species of the genus *Micarea*. In the course of the visit, Gintaras also visited the Natural History Museum, London, to consult the library and herbarium.

Publications

Student's Flora of Tasmania

Preparation of the new and revised *Student's Flora of Tasmania* for the vascular plants continued through the revision of the Dicotyledons (existing Volumes 1-3). Dennis Morris has completed accounts for about 25 families in total.

Census of the Tasmanian Vascular Plants

Alex Buchanan completed a new update (Supplement) to the Census, summarising changes since June 2002.

Lichen Atlas

Gintaras Kantvilas, Jack Elix (Canberra) and Jean Jarman produced the first volume of *Tasmanian Lichens: Identification, Distribution and Conservation Status*.

Financial Diversification

The Herbarium continues to actively seek external funds to support core activities, broaden its research outputs and improve the collection.

During the year a number of State and Commonwealth Government projects undertaken continued to attract significant financial support, while consultancy work for private sector companies provided new income opportunities.



Collection Management

The Vertebrate Zoology department has enjoyed an extremely busy and productive year, having participated in a broad range of field work, research and public programs.

Thylacine Rug Acquisition

In September 2002 TMAG made one of its most important acquisitions in many years, that of the Stevenson Thylacine Rug. The rug, purchased at auction, is a buggy rug comprising eight juvenile Thylacine skins.

The Stevenson Thylacine rug is globally significant because;

- It is the only known Thylacine rug in existence, and the only Thylacine material known to have been worked into a functional piece of furniture.
- Of the three Thylacine rugs documented, only this one is still known to be in existence, and this rug is the only evidence ever of a Thylacine rug being made from more than one skin.
- The eight skins which comprise this large rug are in excellent condition. Unlike other known skin specimens these are not faded; instead they are very thick and soft furs because they are from young animals.

The status of the Thylacine as a Tasmanian icon is unchallenged. TMAG receives in the order of 150 enquiries a year including authors, film makers, journalists and general research enquiries.

TMAG currently holds the most comprehensive collection of Thylacine material in the world. The purchase of the Stevenson Thylacine Rug in September 2002 provided a unique addition to this world renowned collection.

Important Acquisitions

Throughout the year, a variety of rare and important specimens were collected or donated.

A specimen of the extinct Macquarie Island parakeet, *Cyanoramphus novaezelandiae erythrotis* has been added to the TMAG collection.



Above: *Thylacine rug acquisition and pincushion made from lower jaw of a thylacine*
Above left: *Thylacine skin and Brian Looker; Preparator; prepares to cast a specimen of 'Shepherds Beaked Whale'*
Below left: *Brian Looker unearths a whalebone*





Top: Tasmanian devil
Above: Fur seal

Two Pygmy sperm whales, *Kogia breviceps* were collected and prepared, as was a *Risso's dolphin*, *Grampus griseus*.

A rare species of beaked whale, Shepherd's Beaked Whale, *Tasmacetus shepherdi*, washed up on the East Coast of Tasmania was collected and prepared. This is a first confirmed record of this species in Tasmanian waters. There are very few specimens in museums.

Other Acquisitions

A Giant squid *Architeuthis dux*, was collected in July from Seven Mile Beach and displayed in the Museum Courtyard.

Material from seven Sperm whales *Physeter catadon*, including a full sperm whale jaw, which had stranded at Croppies Beach, Waterhouse Point was collected and prepared.

A complete population of Feral Cats, *Felis catus*, which had been isolated on an Wedge Island for 30 years, were donated following an eradication program.

Emperor penguin, *Aptenodytes forsteri* chicks and an adult were donated by AAD.

Whale Graveyard

TMAG Vertebrate Zoology staff were notified that whalebones were becoming exposed on Ocean Beach, on Tasmania's West Coast. The bones were from a stranding of 64 pilot whales in 1992, and staff travelled to Strahan and managed to retrieve two skulls and a skeleton. These are currently being prepared for inclusion in the collection.

State Depository Role

A major achievement over the last year has been to formalise the role of TMAG as the state depository for vertebrate material collected. This has been achieved through the DPIWE permit system.

Outreach Activities

Aquaculture Workshop

Vertebrate Zoology staff hosted a workshop for salmon fish farm operators, South Australian Fisheries and Parks staff, Plastic Fabrications, Onesteel and NCB staff who deal with the interactions between fish farmers and seals. The workshop allowed participants to discuss issues and find solutions to the problem of net damage and fish loss from seals.

Marine Conservation Display

Staff of Vertebrate Zoology collaborated with the Marine Conservation Unit of the Nature Conservation Branch of DPIWE with a marine display at the Wooden Boat Festival. It is estimated that 40,000 people attended the festival. It is estimated that more than 10,000 people viewed the display.

Squid on Ice

A specimen of the Giant Squid has been prepared and is currently in the process of being frozen with the intention of incorporating it in a display. Dissecting and setting the squid in position in the tank was achieved over two days, the arms and tentacles are held in position with wires.

Macquarie Island exhibition

Material and information were provided for the Macquarie Island exhibition held in the Bond Store to celebrate the Tasmanian Mid Winter Festival.

Media

David Pemberton was interviewed by ABC television about the use of hair analysis techniques as part of the Fox Identification Program.

Kathryn Medlock launched the book *The Tiger Project* by Susanna Van Essen. This adolescent fiction novel draws heavily on the TMAG Thylacine exhibition and the pouch young specimens.

Kathryn Medlock was interviewed by New Scientist about Giant Squid.

Interviews in relation to the Shepherd's Beaked Whale were provided to ABC News and WIN TV.



Several interviews were provided regarding the Thylacine including ABC radio Sydney, ABC radio Hobart, Sunday Herald and Sunday Age.

Book Launch

The recent publication, *Thylacine: the Tragic Tale of the Tasmanian Tiger* by author David Owen was launched in the Zoology Gallery at TMAG.

On the Road Again

This important initiative to take TMAG collections into the community was again highly successful in providing information and access to TMAG collections to regional Tasmania.

Thylacine

During November, a Thylacine exhibition including a trapper's cage, two case displays, an audio video presentation, and a digital database was displayed in Strahan and Zeehan.

Squid

A giant squid specimen was taken to the West Coast Pioneers Museum in August and displayed at the Saturday Market Day in Zeehan. The display produced record crowds for the museum, and Curator, David Pemberton, participated in an interview on ABC *Drivetime* to promote the exhibition.



Above: Antarctic residents and masked owl in Zoology Gallery
Left: giant squid

Interpretation Workshop

A workshop on the Thylacine was conducted for tour guides in Strahan in preparation for the display of the Thylacine Rug. The workshop proved to be very helpful and TMAG staff were able to help the guides to improve the standard of information they convey both on tours and at the Thylacine information centre. TMAG staff also helped conduct biological surveys between Hells Gates and Granville Harbour while in Strahan.

Agfest

Assistance was given to the Nature Conservation Branch of DPIWE with a display about marine conservation at Agfest. Vertebrate Zoology staff manned the display for the three days of Agfest thus promoting TMAG in rural Tasmania.

Research and Field Trips

Thylacine

Work continues on the database of Thylacine specimens in museums overseas. In the past year, new items have been located in five museums in the USA, Sweden, France and Poland. An extremely significant find was the discovery of an adult female Thylacine specimen preserved in ethanol. This animal has been identified as one that was exported from Tasmania in September, 1884.

Bass Strait Islands: Seals, small mammals and botanical survey

Staff participated in surveys of several Bass Strait islands. These included seal surveys on Tenth Island, Judgement Rocks, Moriarty Rocks – West Moncouer, Wright Rock and the Hogan Group.

A botanical survey of Redondo Island and small mammal surveys on Erith Island and Redondo Island were also undertaken. This trip was very successful and included the discovery of a new Fairy Tern, *Sterna nereis* colony. These birds are a Threatened Species thus making this discovery important.



Top: gannett in flight Above: Benjamin A. Sheppard [photographer]; Thylacine at Beaumaris Zoo, (Hobart Zoo on the Domain) Right: J W Beattie [L/S prepared by]; Tasmanian Marsupial Wolf – Thylacine. 1910c. Left: thylacine pouch young



Island mammal survey

Staff spent four days on De Witt Island surveying for small mammals. This project was very successful recording two new mammals on the island *Antechinus minimus* and the Eastern Pygmy possum, *Cercatus nanus*.

Albatross population study

Staff visited the Mewstone as part of the Curator's ongoing Albatross population and island survey work. While there, plant and lichen specimens were also collected.

Pedra Branca: Albatross, gannets and skinks

Dr David Pemberton acted as specialist scientific adviser on an Nature Conservation Branch (NCB) field trip to the island Pedra Branca. The aim of this work is to continue the annual survey of albatross and gannet populations, and to monitor the population of the Pedra Branca skink.

These surveys have been conducted on Pedra Branca over the last 20 years and the accumulated data is a valuable resource for managing these isolated populations. Unfortunately, the trip ended tragically when a member of the party, NCB field volunteer, Hamish Saunders, was washed off the rock. The three other members of the party were airlifted to safety.

Thylacine skeleton

A project to replicate a Thylacine skeleton has progressed well, and the first examples of model bones are very impressive. This project is being funded by Federal Hotels and Resorts who require an articulated skeleton for their Strahan Thylacine Information Centre display.

Discovery of a Thylacine skin

During the year a privately owned Thylacine skin was assessed, photographed and returned to its owner. A report compiled on this specimen contained information on correct storage and care of the skin. The owner was also provided with a short history of the family's historical association with Thylacines.

Liaison with Research Institutes

Vertebrate Zoology staff visited the vertebrate section of Museum Victoria whilst in Melbourne. The purpose of this visit was to identify material collected from DeWitt Island and to arrange for collaborative work on the Thylacine and the extinct emus of Tasmania and King Island.

Molecular Sample Collection

TMAG has been approached by NCB Threatened species scientists to receive molecular material from the captive-breeding program of Orange Bellied Parrots. Molecular samples have been provided to Latrobe University for study.

Tissue samples from Waterhouse sperm whales have been forwarded to the US for genetic analysis, while Albatross molecular samples were sent to the ANU Evolutionary Biology department.

Workplace Safety

As part of an overall departmental review of field work practices, TMAG staff have developed risk assessment and risk management strategies for field staff. This has resulted in the development of a draft guide for field work practices and the purchase of additional safety equipment such as EPIRB's, GPS and miscellaneous items for handling hazardous material such as rotten carcasses.



Collection Management

Invertebrate Zoology staff participated in an extensive research, collection management, and display program during the year.

Bumble Bee Project

The Bumble Bee project which was assessing the impact of bumble bees on the native flora and fauna was completed during the year. In addition to the completion reports relating to a \$250,000 research grant on the environmental impact of bumblebees from the Horticultural Research Development Corporation, over 600 insects collected during the survey were curated into the TMAG scientific collection.

Bornemissza Collection

An extensive and valuable world-wide beetle collection was donated by Dr George Bornemissza. This was the third stage of a four stage series donation by Dr Bornemissza, the last of which will be exhibited in 2004.

Giant Squid

A Giant squid, *Architeuthis dux*, was washed up on Seven Mile Beach, Tasmania, in July 2002 and collected by TMAG staff. After extensive media and public interest a dissection was made and muscle tissue donated to TAFI, University of Tasmania. Other Giant squid parts have also been lent for research to the University of Lund, Sweden, and Los Alamos National Laboratory, New Mexico. The Invertebrate Zoology department of the TMAG continues to cooperate fully on a world-wide basis with these rare and fascinating animals.

Mollusc Donation

An extensive collection containing molluscs from around Tasmania was donated by Ms Janet Middleton of the TMAG, including a very large collection of marine molluscs collected by Mr David C.A. Wilson and Sir Henry Somerset. Of 588 samples, 277 are from Tasmania and have been registered into the invertebrate collection.

Baudin

Research continued to trace the scientific voyage and anchorages of Nicolas Baudin in the D'Entrecasteaux Channel during his voyage in early 1802.

Type Specimens Donated

Holotype specimens are the original specimens used in describing new species, while paratype specimens are additional specimens of the same species. During the year, type material of newly discovered spiders, jellyfish and sea stars was lodged in the TMAG collections.

Outreach Activities

Bornemissza Collection Exhibition

An extensive and valuable world-wide beetle collection by Dr George Bornemissza was on display in the museum for eight months. This was the third stage of a four stage series.

Giant Squid

Invertebrate Zoology staff participated in the very successful display of a giant squid taken by TMAG to the West Coast Pioneers Museum at Zeehan, Tasmania.

Temporary Displays

A display of giant tarantula spiders was set up in the Zoology Gallery, much to the delight of visitors, particularly school groups.

Visitors

During the year, 435 enquiries were answered for public sectors, and government and scientific agencies.

Presentations

Tours of the Invertebrate Zoology collections and demonstrations of micro-graphy were given to many organisations including *The National* Trust,

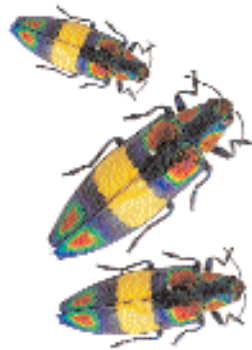


Above: Liz Turner, Curator Invertebrate Zoology inspects giant squid





Above: Dr George Bornemissza and Beetles, Bornemissza Beetle Collection
Right: Bees and wasps (artist Mike Tobias)



The Tasmanian Heritage Festival, Open Night at the TMAG, and for the 21st Birthday of the Friends of the Tasmanian Museum and Art Gallery.

During the year presentations were given to various schools including a talk on giant squid Architeuthis to a combined audience of St Helens women in marine industries group, and marine science students from the St Helens District High School.

Staff participated in the *Night at the Museum*, exhibited the Giant Squid stranded at Seven Mile Beach in July 2002 and also a 400+kg sunfish, *Mola mola*, found on White Beach, Tasman Peninsula in February 2003, and assisted with the *Touch Tank* provided by the Tasmanian Marine Naturalists Association for National Science Week.

External Duties

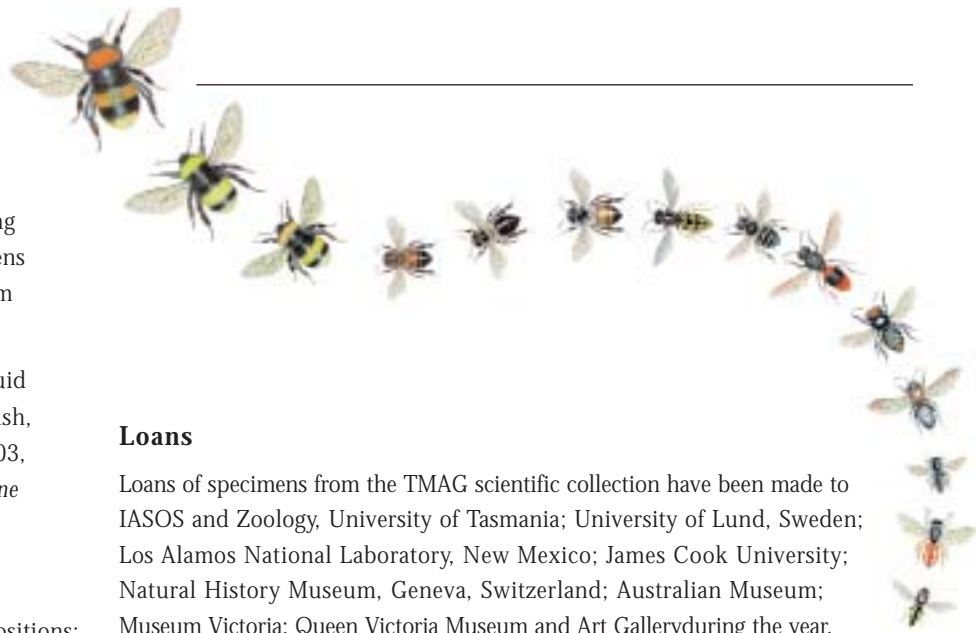
Invertebrate Zoology Curator, Elizabeth Turner held the following positions:

- Member of the Committee for the Australian Entomological Society and the National 5th Invertebrate Biodiversity *Invertebrates and Environmental Changes* combined Conference, to be held in Hobart in late September 2003.
- Member of the sub-committee of the Aboriginal Arts Steering Committee for research into aboriginal necklaces.
- Member of the Threatened Species Committee.
- Member of the Tasmanian Marine Naturalists Association.
- Member of the Marine Aquarium Scientific Committee.

Media

Several interviews were conducted relating to the Giant Squid, including The Sunday Mercury; The Examiner; The Mercury; ABC TV; WIN TV; Southern Cross TV; AAP; Channel 9 Today; most state capital newspapers and TV; headlines on CNN, and ABC TV *Richard Moorecroft Goes Wild*.

An article on tarantula spiders was also prepared for The Australian; and an interview for ABC Radio Adelaide.



Loans

Loans of specimens from the TMAG scientific collection have been made to IASOS and Zoology, University of Tasmania; University of Lund, Sweden; Los Alamos National Laboratory, New Mexico; James Cook University; Natural History Museum, Geneva, Switzerland; Australian Museum; Museum Victoria; Queen Victoria Museum and Art Gallery during the year.

Earlier loans have been returned from Te Papa Museum, New Zealand; Queensland Museum; Australian Museum; Museum Victoria; Western Australian Museum; University of Tasmania.

Professional Development

Staff attended a workshop and forum at the Australian Museum, Sydney, on the formation of *Australian Marine Invertebrate Taxonomists (AMIT)*. This involved representative marine curators from all Australian State and Territory museums and discussed the future of 40 Australia-wide Port Survey collections. Work has continued throughout the year to database and curate the thousands of species collected in these surveys for curation and data basing into relevant scientific collections.

Staff also attended a meeting and a subsequent sub-committee meeting of the Aboriginal Steering Committee of Arts Tasmania to develop a research grant proposal for research into the *Maireener (or Kelp shell)*, for the preservation of the cultural practice of shell necklace making by Aboriginal women. A database is being compiled by the TMAG Invertebrate Zoology section of images of all possible necklaces and their associated strings.

Collection Management

Work continued throughout the year on a number of key projects within the Geology department.

Curation

The curation of minerals collected on the Fourth International Mineralogy in Museums Conference field trips held in November and December, 2000 were undertaken. These trips were to Broken Hill, New South Wales and Lake Boga, Victoria. Curation was also undertaken on a suite of recently donated dolerite specimens, and a collection of recently donated Victorian Tertiary invertebrates (mostly molluscs).

Database

Information upgrades were made to index cards and database entries for a number of re-identified mineral specimens. Upgrades were also made to the temporary petrological register and palaeontological register in the database.

Policy Development

The Curator of Geology completed the Deaccession Policy for Geology as part of the overall TMAG policy review.

Outreach Activities

Displays

The Geology department participated in a diverse range of public programs and activities during the year.

Displays were prepared for:

- *Open Night at the Museum*: Sharks, Rays and Teeth
- *Open Night at the Museum*: Common Permian Fossils of southern Tasmania
- *Earth Science Week*: What is a Rock? Igneous, Sedimentary and Metamorphic Rocks. This display included more than three dozen



Left: crocoite
Top: aragonite, calcium carbonate, 15cm wide
Above: cerussite, lead carbonate, Dundas, 7.5cm wide

specimens, the majority of which were large, and had never been on display before.

- Flinders Island: fossilized whales and sharks; a display for Visitors' Services
- *Macquarie Island*; geological specimens from the island

Visitors

The Curator addressed over 434 enquiries and provided identification services for a range of visitors from specialist individuals, groups or institutions to general visitors.



Above: jaws of the Black Shark Dalalalus licha, c 79 cm, male, off southern Tasmania
Right: head of the Thresher Shark Alopius vulpinus, 2.16m, male, off South Arm, Tasmania
Below: Knightia sp., Eocene, Wyoming, USA



Presentations

Kemp, NR and S Turner, 2002. *Chondrichthyan biodiversity in early Cretaceous seaways of Queensland*. Poster presentation at the First International Palaeontological Conference, Macquarie University, Sydney, 6-10th July, 2002

Friends' School, Grade 2: *The rocks of your backyard*.

Seniors' Week group: *Behind the Scenes – a look at the geological collections*.

School Holiday Programme: *What tooth is that? Sharks' teeth and their diet*.

The Curator also refurbished rock, mineral and fossil loan sets for the Visitor Services loan program.



Additional Duties

As a keen Bonsai devotee, the Curator of Geology organised a Bonseki-Bonsai Exhibition, Workshop and Demonstration, over three days in the Bond Store. A contingent of five visiting Japanese artists ran the Bonseki workshops, while the Bonsai Society of Southern Tasmania the Bonsai exhibition.

Field Work and Research

Moulds and casts were made of an echinoid *Meganotocrinus*. The original was found by Mr P. Rubenach, St Marys, NE Tasmania in the early Permian near Elephant Pass. It is the first record of that genus from the Permian of Tasmania. The original was sent to Dr P. Jell, Queensland Museum for further study. Mr Rubenach graciously accepted the moulds and casts in lieu of the originals

Further samples of basalt from Geilston Bay were collected with Dr I Sutherland (Australian Museum) for new Ar-Ar dating methods. It is hoped that the newer dating technique will produce more accurate ages from those obtained from samples collected and dated – as Upper Oligocene – in the early 1970s.

Identification of a parcel of approximately 20 specimens of shark teeth was undertaken. These were mostly Tertiary, but included some Cretaceous, from South Australia, Victoria and Queensland.

Fossils minerals and rocks from a number of localities along the East Coast were collected, and visits made to several members of the public in Triabunna, Buckland, St Marys and Scottsdale to enable local enquiries to be answered.

The Curator also commenced work on a check-list of meteoritic and related material in the TMAG collections.

ART

Gifts

Max Angus (b 1914) (*Moonrise*).
watercolour
26.7 x 37.8 (sight)

B Bisdee
Old Mill Constitution Hill
oil on canvas
28.8 x 39.2 (sight)

Harry Buckie (1897-1982) (*Landscape Lake Pedder?*) 1954
watercolour
34.6 x 40.4 (image and sheet)
55.4 x 60.8 (cardboard)

John Eldershaw (1892-1973) (*Wharf at Stanley*)
watercolour
41.5 x 35.6 (sight)

Allan C Glover (1900-1984) *Hilltop* 1930
etching
26 x 20.2 (image and plate)
35.9 x 28.1 (sheet)

Harold Herbert (1892-1945) *The two trees*
watercolour
17.5 x 28.7

Mabel Hookey (1871-1953) *The Bush Road*
oil on canvas board
31 x 45 (sight)

Harry Kelly (1896-1967) (*Landscape with river and trees*)

monochrome pastel
47 x 62 (sight) 63 x 76.2 (cardboard)

Matthew James MacNally (1874-1943) (*Landscape Mooroolbark?*) 1922
watercolour
47.9 x 61.1

Jean Marsh (1896-1986) *Placa de Mayo*
pastel
26.4 x 22.37

Geoff Tyson (1911-1986) *Last year's bushfire*
watercolour
29.8 x 38 7461

Vivian Phillip Webb (1892-1974) *After the Flood, April 1960, in Risdon Road, New Town* 1960
oil on canvas
25.7 x 30.7

Laurence White (1914-1974) *Hagley Harvest*
watercolour
32.8 x 44.4 (sight)

Laurence White (1914-1974) *The Western Tiers*
watercolour
33 x 44.3 (sight)
All thirteen works above were presented from the Estate of Mrs Anne Wayn in memory of her father Stephen Bisdee, 2002

Pat Brassington (b1942) *The Frog* 1998

digital print
85.5 x 74.5 (image) 103 x 92 (sheet)
Anonymous gift, 2002

Matt Calvert (b1969) (*Untitled*) 1998
glass
21 (h) x 54 (l) x 32 (d) (irregular)
Anonymous gift, 2002

Stephen Carson
Gregor (from the series Wrestle) 1997
photo type C print
60 x 49.5 (sight)
Anonymous gift, 2002

Simon Cuthbert (b1964) *No.3 from the series 'After Duke'* 1997/98
photo type C print
53 x 76 irregular (image)
Anonymous gift, 2002

Jack Carington Smith (1908-1972) *Hester Clarke* 1944
oil on canvas
94.6 x 75.5
Presented anonymously under the Taxation Incentives for the Arts Scheme, 2003

Jack Carington Smith (1908-1972) *Seated Woman* 1961
oil on canvas
76.2 x 61.5
Presented anonymously under the Taxation Incentives for the Arts Scheme, 2003
Jack Carington Smith (1908-1972) *Misty morning* 1945

oil on canvas
41.5 x 53.6 (sight)
Presented anonymously under the Taxation Incentives for the Arts Scheme, 2003

Jack Carington Smith (1908-1972) 210 paintings, drawings, watercolours, and eleven sketchbooks including oil on canvas, watercolour, pen, and pencil 1944 – 1968
Presented anonymously under the Taxation Incentives for the Arts Scheme, 2003

John Sell Cotman (1782-1842) *House in the Place de la Puchelle, at Rouen* 1821
etching
33.4 x 24 (image)
Gift of Tony Brown, 2002

George Davis (b1930) *Splitting posts with Uncle Dick: A wonderful day at the Broadmarsh* 1948
pen ink and wash
26.6 x 23 (image)
Gift of Kathy Kamsek, 2003

Haughton Forrest (1826-1925) *Crossing the Bar, Dunkirque Harbour*
oil on board

Edith Holmes (1893-1973) *Fountain, Trafalgar Square, London* 1958
oil on canvas



Above: (17th Century Dutch) artist unknown [artist] Portrait of Abel Janszoon Tasman 1640s



Above: John Glover [artist] An Emigrant to Van Diemens Land 1830
Right: attributed to CHT Costantini (artist) 'Port Arthur, Van Diemen's Land' c1832
Below: Thomas Bock (artist) 'Emma, daughter of Edward and Maria Lord'



73.5 x 57.5
Dorothy Stoner (1904-1992)
Miss Junee Cornell as Catherine Sloper in 'The Heiress' 1956
oil on canvas
160 x 81
The three above paintings above were presented from the Estate of Mrs Mary Olive Junee Williams (née Cornell), 2003

Betsy Gamble (1939-2001)
20 Duke Street c1950 (2) 1988
etching and aquatint
45.5 x 47.5 (plate)
Gift of the Images Art Group, in memory of Betsy Gamble, 2003

Alan Gelston (1929-1964)
The Very Reverend Dr Guilford Young (Archbishop of Hobart) 1962
oil on board
Gift of Carmelita Clohesy, the artist's widow, 2002

Patricia Giles (b1932)
Mists on Mt. Wellington 2002
watercolour and chinese ink stick
63 x 101.8 (sight)
Gift of Mrs Jessie Luckman under the Taxation Incentive to the Arts Scheme, 2002

Neil Haddon (b1967)
Untitled 2001
acrylic on aluminium
28 x 35.4
Anonymous gift, 2002

Jaqueline Hick (b1919)
Sleeping Boy 1950
oil on hardboard
29.3 x 43.2

Anonymous gift, 2003
Gwen Leitch Harris (b1931)
Mount Direction from the Derwent II 1987
pastel on paper
19 x 24
Gift of the Artist, 2003

Gwen Leitch Harris (b1931)
Mount Direction from the Derwent 1987
pastel on paper
37 x 47
Gift of the Art Guides of the TMAG, 2003

Bruce Nabegeyo
Clan: Djalama; Language: Kunwinjku
Contact ochre
51 x 125
Gift of the Injalak Arts and Crafts Association, Northern Territory, 2002

Sally Robinson (b1952)
Phillip Law 2002
acrylic on canvas
122 x 168
Gift of the artist, 2003

John Vella (b1969)
Marks made by the lens of a camera 2001
acrylic on canvas board
35.5 x 27.7
Anonymous gift, 2002

Harald Vike (1906 – 1987)
(Man with Long Hair) 1983
oil on board
21.5 x 18
(*Blockader in the Rain*) 1983
oil on canvas on board



90.5 x 60
Blockader, Franklin 1983
acrylic on board
61 x 41
The little beach near Strachan, South West Tasmania, Franklin Blockade 1983
pencil and watercolour
33.5 x 52
Hogarth Falls, Franklin Blockade 1983
watercolour and gouache
37 x 54.5

Self portrait 1970
pencil on paper
37.5 x 26.5
Truck arrival from Hobart to TWS Peoples Park 11 o'clock pm 1983
gouache
35 x 46
All seven works above, were presented by James Agapitos and Ray Wilson under the Taxation Incentives for the Arts Scheme, 2002

Richard Wastell (b1974)
Lake St Clair (after W C Piguenit) 1995
acrylic on cotton duck
30 x 33

Anonymous gift, 2002
Richard Wastell (b1974)
Solitude 1998
oil on cotton duck
61 x 66
Anonymous gift, 2002

Richard Wastell (b1974)
Seeing double 1997
oil on cotton duck
59 x 61
Anonymous gift, 2002

Olive Wilton (1883 – 1971)
Bust of Junee Cornell
Plaster
presented by Peter Lewis Williams in memory of his step-mother, AR

Purchases

Gwen Leitch Harris (b1931)
Evening Light – Darwin Nocturne 1996
oil on canvas
61 x 61
Purchased with the assistance of the Friends of the Tasmanian Museum and Art Gallery, 2003

DECORATIVE ARTS

General Historical Collection

- Set of bookcases transferred from museum furniture (P2003.128)
- Side Table transferred from Museum furniture (P2003.130)
- Easy Chair, c.1970 (P2003.133)

Costume and Textiles

- Mans Suit, 1930 (P2003.129)
- Wedding Dress, c.1869 (P2003.134)
- Wedding outfit c.1905 (P2003.135)
- 4 pairs of court shoes, c.1905, Mrs J Harvey
- Unknown maker
Set of embroidered cloths from Turkey, Early C20th
Presented by Rhoda Leslie P2003.2
- Unknown maker
Souvenir of Egypt embroidery, 1915
Presented by Mr Roger McNeice P2003.3

Studio Crafts

- *Domestic Icon # 4* Hand printed tea towel, Ms. H. Swann
- Three necklaces by Robyn Gordon, donated by Ann Darling:
Gum nut Necklace, 1983, P2003.7
Barrier Reef Necklace c.1982, P2003.8
Eucalypt Leaf Necklace, c.1982, P2003.9
- Good Friends Triple Teapot by Vipoo Srivilasa (P2003.127), with funds from the FTMAG
- *Demeter's Demented Granddaughter* (P2003.131 and P2003.132) and *Demeter's Demented Granddaughter's* Dog ceramic sculptures by Jenny Orchard.

- *The Wongs' Collection*
117 objects: 94 ceramics (P2003.10 –) dating from the Neolithic period to the 1980, 9 wood carvings (P2003.101 – P2003.109), 2 bronze reproductions (P2003.10 – P2003.11) and 15 snuff bottles (P2003.112 – P2003.126)

HERBARIUM

Specimens

Over 1050 specimens were donated to the Herbarium by individuals and institutions. Several very significant acquisitions were received from the Natural History Museum, London. These included specimens collected during Captain Bligh's visit to Adventure Bay in 1792 in the ships *Providence* and *Assistant*, material collected in the Tasmanian interior in the 1840s by Ronald Campbell Gunn, and a specimen collected by French botanist, Jacques Julien de Labillardière during the expedition of D'Entrecasteaux to Australian waters in 1792-93. This last specimen is the only collection from this expedition held in Tasmania and is a very good match for Labillardière's illustration of *Croton quadripartitum* and possibly part of the type collection. Other additions to the collection were also made by Herbarium staff as part of research activities and other projects. The following people presented material to the Herbarium: T. Ashlin, R. Barbour, P. Black, K. Bonham, S. Corbett, A. Crane, A. Dalglish, A. Downing, F. Duncan, H. Elliott, K. Evans, K. Felton, N. Fitzgerald, W. Fletcher, B. French, P. Frost, L. Gilfedder, B. Graham,

A. Gray, T. Halliday, J. Hamilton, C. Hanson, E. Holloway, E. Lazarus, J. Madden, M. Matsuki, C. Maxwell, S. McGuigan, S. McMullan-Fisher, G. Milne, P. Milner, A. North, P. Parsons, D. Ratkowsky, D. Reynolds, T. Reynolds, N. Roberts, T. Rudman, J. Sawbridge, R. Schahinger, R. Seppelt, S. Smith, K. Stewart, C. Strain, K. Stuart, J. Taylor, L. Thorne, M. Visoiu, M. Wapstra, A. Woodward, A.M. Young and D. Ziegler.

During the year, 630 specimens were received on exchange. Institutions that donated material included the National Herbarium of New South Wales, the State Herbarium of South Australia, the Queensland Herbarium, the Australian National Herbarium (Canberra), the University of Otago (Dunedin, New Zealand), the Auckland War Memorial Museum (New Zealand), the Natural History Museum (London, UK), the Nationaal Herbarium Nederland (Holland), Freie Universität (Berlin, Germany) and the Field Museum of Natural History, Chicago (USA).

Donated Publications

Donations of books were received from W.M. Curtis, M.F. Duretto, R. Elliot, P. Lane, D. Morris, A. Rozefelds, R. Seppelt and E. Woolmore. The library continues to receive complimentary copies of the house journals of other Australian herbaria. A significant acquisition included the complete run of the journal *Studia Geobotanica* (from 1982 onwards), donated by the Botany Department of the University of Trieste, Italy

VERTEBRATE ZOOLOGY

- Stevenson Thylacine rug
- Macquarie Island parakeet, *Cyanoramphus novaezelandiae erythrotis*
- Pygmy sperm whales, *Kogia breviceps*
- Risso's dolphin, *Grampus griseus*
- Shepherd's Beaked Whale, *Tasmacetus shepherdi*
- Giant squid *Architeuthis dux*
- Sperm whales, *Physeter catadon*
- Feral Cats, *Felis catus*
- Emperor penguin, *Aptenodytes forsteri*

INVERTEBRATE ZOOLOGY

588 molluscs collected by Mr David C.A.Wilson and Sir Henry Somerset, and donated by Ms Janet Middleton of the Tasmanian Museum.

Type Specimens

- Holotype and paratype spiders were donated to the TMAG. One species, *Tasmabrochus turnerae*, is named after the collector, Elizabeth Turner, of the Tasmanian Museum.
- Paratypes of jellyfish (in press) donated by Ms Lisa-Ann Gershwin, Berkeley, University of California, USA.
- Paratypes of seastars *Patiriella hystera* donated by Dr Alan Dartnall, via James Cook University.

GEOLOGY

Fossil leaves of the seed fern *Dicroidium zubei* from Wivenhoe, SE Queensland; Triassic; collected and donated, Dr A Rozefelds, TMAG.



Above and below: Wongs' Collection





Top: History items on display
Above: Elspeth Wishart,
Curator of History



- Fossil leaves of the seed fern *Dicroidium zubei* var. *feistmantelii* (Johnston) from Melton Mowbray; Triassic; collected and donated by Mr P Johnson, Carrick, via Dr MR Banks.
- Suite of dolerite – 12 samples, from glass to granophyre – from Hobart and environs; Jurassic; collected and donated Dr D E Leaman, Hobart
- Fossil molluscs (mostly), 58 specimens representing 29 taxa, from Myaring, Victoria; Pliocene; coll and don. Mr A Anderson, Ulverstone
- Sectioned petrified Proteaceae wood from Jimbour, Queensland; associated with Tertiary volcanics (and so perhaps Miocene in age); donated by Mr N Dorpon, Brisbane via Dr A Rozefelds, TMAG.
- Dicotyledonous leaf in heavily ferruginized siltstone from Penna, southern Tasmania; Tertiary; coll. Mr N R Kemp, TMAG.
- Graptolite, *Monograptus thomasi*, from SW of Beaconsfield, northern Tasmania; Early Devonian, collected and donated by Dr M R Banks, Sandy Bay.
- Basalt with vughs of zeolites (mainly analcime) and calcite from Weldborough, NE Tasmania; Tertiary; collected and donated by Mr P Rubenach, St Marys via Mr N R Kemp, TMAG.
- Quartzitic column, polygonal, from Permian sandstone; baked by Jurassic dolerite; 'Stonehurst', Buckland, East Coast, Tasmania; collected Mr B Grahame (owner of 'Stonehurst') and Mr N R Kemp, TMAG.

HISTORY

Items Source

- Cast iron beam scale, butcher's steelyard, bathroom scale, Avery shop scale, 8 imperial weights, 'No Springs' brass scale, Salter spring balance, R.andJ. Beck London microscope, Avery Birmingham bench platform scale, Bizerba Optical scale, Aristocrat Avery optical scale Tony Hurd
- Sewing machine Max Cook
- 4 modern blackwood display cases AXA Australia (Linda Coad)
- Tibetan shawl, Tibetan jewel box containing sand from Yamantaka Mandala, poster Gyuto Monks of Tibet
- 1846 bread crock, 2 picture frames Philip Fowler
- Centenary of Federation advertising material including banners, posters, flags, brochures Department of Premier and Cabinet, c/- Sue Burgess
- Various domestic items and camping equipment Keith Valance
- Fence spikes found at Queens Battery near the Cenotaph in Hobart Hobart City Council (c/- Brendan Leonard)
- Swagger stick Imogen Shuey
- Large light globe Michael Caldwell
- Backpack Anja Boot
- Metal souvenir ashtray with map of Tasmania Marie Freeman

- Braun flash gun (for camera), c1950 Mr A.O. Kaye
- Portable transistor radio, 1964 Janet Middleton
- 13 x plastic bags from Hobart retailers Ann Hopkins
- 6 x Tasmanian souvenir tea towels Jean Slaifstein
- Cotton gloves and box of Eagle steel pens Patricia Sabine
- Trust Bank plaques, banners, impressing stamps, deposit boxes Archives Office of Tasmania
- British muzzle loader gun Tony Cooper
- Electronic 30mm Olympus camera Andy Gregson
- Hardwood printing block Andy Gregson
- 2 x Nineteenth Century cut throat razors Mr Don Field
- Gun flint Richard Todd
- Corona portable typewriter, c1920 Mr J.B. Courtenay
- Portable typewriter used to type manuscripts for the Ross Bridge book and thylacine research by Norman Laird.
- Rob Valentine (on behalf of Mrs Hazel Laird)
- 4 x Siemens wall telephones, 1 distribution box and 3 small distributor boxes Mr Geoff Urquhart
- 2 x IBM Mag Card computers, 1,000 plus cards Mr George Histed
- World War Two British merchant navy jacket and trousers Dr H.B.C. Houston
- Set of draughtsman's tools Mr A.W. Gregson

- Port Arthur Shop plastic bag Mr and Mrs Richard Lord
- Ostrich egg with image of Lord Kitchener Mrs Billing
- 2 x imperial brass hanging scales Mr Julian Halls
- Electric heater In•house
- Portable record player Patricia Sabine
- Souvenir apron Hazel Emerson
- New Town High School uniform Alec Young
- Italian fountain pen set Mrs R. Decesare
- 8 x flour/grain bags of Tasmanian origin Carol Ireland
- 2 Edison dictaphones(1 for parts) Ivan Pearson
- 1 x Cradle Mountain National Park timber direction sign Chris Girvan
- 1 x 'Three Bears Porridge' rolled oats bag Jo Huxley
- Confectionary making and pastry cook equipment used by Edmund James Lewis at Benjamin's Confectionery Liverpool Street, Hobart and Cripps Battery Point, early 1900's. Mrs Chris Nelán and Mrs Joy Pearsall
- Ceremonial plate of the Lord Mayor of London, Ald Gavyn Arthur, with Arthur family coat of arms Ald. Gavyn Arthur, The Rt. Hon Lord Mayor of London
- Additional Baily material including signet ring with Australian coat of arms inscribed 'A Lorna B' belonging to Baily's wife, along with documents, photographs and

- certificate. Sue Baily
- Gestetner related material including mat, corrector and paper ex TMAG equipment Alison Melrose
- Collection of rubber stamps ex TMAG office Alison Melrose
- Collection of material including: 1960's movie camera, 1960's 8mm movie projector and splicer, 1940's slide projector, c 1850's hand sewing machine, 1960's LP record rack, 1950's tape recorder, Hobart High school 1940's School cap, 1940's Hobart High School Prefects Cap, 1949 Hobart High School Prefects Blazer, University of Tasmania's Student's blazer 1950. David Dilger
- Wet suit c1920's Daphne Reeves
- Paper Bag marking 100 years of EA Joyce and Son Alison Melrose
- National Parks and Wildlife Service Fire Control Guidelines Chris Arthur

NUMISMATICS

- Ancient Currency Roman Imperial (1)
- Ancient Currency (Replica) Japan (1)
- Ancient Currency (Replica) Japan (1)
- Apothecary Weight Great Britain (1)
- Badge (Amusement) Australia (1)
- Badge (Appeal) Australia (1)

- Badge (Bowls) Australia (1)
- Badge (Civil Defence) Australia (2)
- Badge (Commemorative) United States of America (1)
- Badge (Education) Australia (2)
- Badge (Football) Australia (1)
- Badge (Militaria) Australia (3)
- Badge (Musical) Australia (1)
- Badge (Red Cross) Australia (1)
- Badges (Transport) Australia Union of the Soviet - Socialist Republics (3)
- Banking Material Australia (1)
- Banknotes Australia, Austria, Egypt, European Economic Union, Great Britain, India, Ireland, Japan, Malaya (Japanese Occupation), Nepal, Singapore, Sri Lanka, Thailand, United States of America, Yugoslavia (30)
- Button (Militaria) Great Britain (1)
- Campaign Medals Australia Great Britain (3)
- Cheque Australia (4)
- Circulating Coins Australia, Austria, Belgium, Brazil, Brunei, Canada, Cayman Islands, Ceylon, Chile, China, Columbia, Denmark, East Africa Fiji Finland France French Polynesia Germany Germany (Democratic Republic) Germany (West) Great Britain Greece Hong Kong India Indonesia

- Ireland Israel Jamaica Japan Korea (South) Lebanon Luxembourg Malaysia Mexico Mozambique Myanmar Netherlands New Brunswick New Caledonia New Zealand Norway Pakistan Panama Papua New Guinea Peoples Republic of China Philippines Poland Portugal Republic of China Russia Singapore South Africa South Korea Sri Lanka Straits Settlements Sweden Switzerland Thailand Trinidad and Tobago Ukraine Union of the Soviet Socialist Republic United States of America Uruguay Venezuela Western Samoa Yugoslavia Zambia (586)
- Coin (Counterfeit) Australia (7)
- Coin (Maundy) Great Britain (4)
- Coin (Play Money) Australia (1)
- Compact Disc Australia (1)
- Credit Card Australia (1)
- Die Australia (7)
- Love Token Great Britain (3)
- Medal (Award) Australia (2)
- Medal (Award) Great Britain (1)
- Medals (Commemorative) Australia Great Britain India Israel Union of the Soviet Socialist Republics United States of America (21)
- Medal (Commercial) Australia (12)

- Medal (Commercial) Great Britain (1)
- Medal (Religious) Great Britain (1)
- Philatelic Australia (1)
- Philatelic (Mint Stamp) China (4)
- Philatelic (Pre stamped envelope) Australia (1)
- Philatelic (Special Interest Cover) China (6)
- Play Money Australia (4)
- Post Card (Philatelic) Australia (1)
- Poster Australia (1)
- Primitive Money New Guinea (3)
- Promissory Note Australia (1)
- Proof Coin Papua New Guinea (8)
- Token (Amusement) Australia (1)
- Token (Amusement) Hong Kong (1)
- Token (Commercial) Australia Belgium France Great Britain Ireland Australia (28)
- Token (Gambling) Australia (2)
- Token (Masonic) Great Britain (1)
- Token (Militaria) United States of America (1)
- Token (Transport) Australia (1)
- Token (Workers Pass) Great Britain (1)
- Tourist Souvenir Ticket China (2)



Above: Wongs' Collection



Above: Emanuel Phillips Fox (artist) 'The Onlooker' c1905
Below: Flotsam and Jetsam
Right: John Skinner Prout [artist]
Mount Wellington, Hobart 1846



CONSERVATION

A. Byrne, E. Burgess and K. Brunoro. (2003) 'Conservation treatment of John Glover's Mount Wellington and Hobart Town from Kangaroo Point' *Artonview* National Gallery of Australia Issue No. 34, pp. 527-31

HERBARIUM

Baker, M. (2003) *Have weed seeds – will travel*. *Tasweeds* 18: 14-15.

Cave, L. (2003) *Australia's Virtual Herbarium – One Stop Shop for Botanical Info on the Web*. *Tasweeds* 18: 24.

Duretto, M.F. (2003) *Notes on Boronia (Rutaceae)* in eastern and northern Australia. *Muelleria* 17: 19-135.

Elliott H.J., Bashford R., Jarman S.J. and Neyland, M.G. (2002) *Foliage insect diversity in dry eucalypt forests in eastern Tasmania*. *Papers and Proceedings of the Royal Society of Tasmania* 136: 19-34.

Kantvilas, G. (2002) *Agyrium Fr., Bryophagus Nitschke ex Arnold and Racodium Fr., lichen genera previously unrecorded for Australia*. *Muelleria* 16: 65-70.

Kantvilas, G. (2002) *Studies on the lichen genus Siphula Fr.* *Bibliotheca Lichenologica* 82: 37-53.

Kantvilas, G. (2003) *An assessment of the conservation status of lichens at the Pontville Small Arms Range Complex and Buckland Military Training Area*. Report for North Barker and Associates, June 2003.

Kantvilas, G. and Elix, J.A. (2002) *The taxonomy, chemistry and morphology of some South American species of Siphula*. *Herzogia* 15: 1-12.

Kantvilas, G., Elix, J.A. and Jarman, S.J. (2002) *Tasmanian Lichens: Identification, Distribution and Conservation-I. Parmeliaceae*. *Flora of Australia Supplementary Series* No. 15, pp. 274.

Leeson, K.E. and Rozefelds, A.C. (2003) *A new endemic Ozothamnus (Asteraceae) from Tasmania, Australia*. *Australian Systematic Botany* 16: 317-322.

Rozefelds, A.C. (2002) *A new species and new combination in Craspedia (Asteraceae) from Tasmania*. *Telopea* 9: 813-819.

Rozefelds, A.C. and Barnes, R. (2002) *The systematic and biogeographical relationships of Ceratopetalum (Cunoniaceae) in Australia and New Guinea*. *International Journal of Plant Science* 163: 651-673.

Rozefelds, A.C., Butcher, R. and Murray, W. (2002) *The species of Sphaerolobium (Fabaceae) in Tasmania*. *Papers and Proceedings of the Royal Society of Tasmania* 136: 153-158.

Rozefelds, A.C. and Christophel, D. (2002) *Cenozoic Elaeocarpus (Elaeocarpaceae) fruits from Australia*. *Alcheringa* 26: 261-274.

Rozefelds, A.C. and Drinnan, A.N. (2002) *Ontogeny of pistillate flowers and inflorescences in Nothofagus subgenus Lophozonia (Nothofagaceae)*.



Plant Systematics and Evolution 233: 105-126.

Schimanski, L. and Rozefelds, A.C. (2002) *Comparative morphology of the Australian species of Geissois (Cunoniaceae)*. *Australian Systematic Botany* 15: 221-236.

Tasmanian Herbarium (2002) *Botanical survey. Proposed farm dam on Copper Creek, Irishtown (E 3.42500 N 54.69400)*. Report to Mr House, August 2002. (Prepared by A.M. Buchanan)

Tasmanian Herbarium (2002) *Botanical survey. Proposed farm dam site between Blessington Road and Logan Road, near Evandale, including the adjacent weir site and water race route*. Report to Mr McKimm,

November 2002. (Prepared by A.M. Buchanan)

Tasmanian Herbarium (2003) *Botanical survey of the area affected by the proposed 'Scamander Sanctuary', at Scamander, Tasmania*. Report to Hamilton Consulting Surveyors, February 2003. (Prepared by A.M. Buchanan)

Tasmanian Herbarium (2003) *Labillardière's collections from southern Tasmanian*. Report to the Forest Practices Board, February 2003. (Prepared by A.M. Buchanan)

Tasmanian Herbarium (2003) *The vegetation of the proposed Telstra cable route at Bradley Street, Coles Bay and an assessment of the likely impact of its installation*. Report to Telstra



Corporation, March 2003. (Prepared by A.M. Buchanan)

Tasmanian Herbarium (2003) *Botanical survey of the property of Mr John Salmon, near Louisville, Tasmania*. Report to Hamilton Consulting Surveyors, April 2003. (Prepared by A.M. Buchanan)

Tasmanian Herbarium (2003) *The vegetation of the proposed Telstra cable route, Learys Corner to Pencil Pine Lodge, and an assessment of the likely impact of its installation*. Report to Telstra Corporation, April 2003. (Prepared by A.M. Buchanan)

Tasmanian Herbarium (2003) *Botanical survey of part of 'Kingston Green', Kingston, Tasmania*. Report to Hamilton

Consulting Surveyors, May 2003. (Prepared by A.M. Buchanan)

Tasmanian Herbarium (2003) *The vegetation of the proposed Telstra cable route at Eaglehawk Neck, and an assessment of the likely impact of its installation*. Report to Telstra Corporation, June 2003. (Prepared by A.M. Buchanan)

Tasmanian Herbarium (2003) *The vegetation of the proposed Telstra cable route at Nubeena Road, Taranna, and an assessment of the likely impact of its installation*. Report to Telstra Corporation, June 2003. (Prepared by A.M. Buchanan)

Tasmanian Herbarium (2003) *Botanical survey. Proposed farm dam site off Baskerville Road near Old Beach,*

on the Burbury property. Report to Mr Burbury, June 2003. (Prepared by A.M. Buchanan)

HISTORY

E. Wishart *Bringing History to Life in Museums* in THRA Papers and Proceedings Vol 50, no. 2 June 2003

INVERTEBRATE ZOOLOGY

Publication of article on research to trace the voyage, anchorages and invertebrate marine specimens of Nicolas Baudin in the D'Entrecasteaux Channel in Jan.-Feb.1802. *Ripples*, an inset of *Waves, Maine and Coastal Community Network*.

VERTEBRATE ZOOLOGY

S.A.Munks, N.Mooney, D.Pemberton and R.Gales

An update on the distribution and status of possums and gliders in Tasmania, including offshore islands.

Fiona Hume, Mark A. Hindell, David Pemberton, Rosemary Gales

Spatial and temporal variation in the diet of a high trophic level predator, the Australian fur seal (Arctocephalus pusillus doriferus).

Pemberton, D. and Gales, R.

Australian fur seals, Arctocephalus pusillus doriferus: pup numbers at Tasmanian breeding colonies (1989 – 1999) and a synthesis of the species population status. *Wildlife Research*.

Kemper, C.M., D. Pemberton, D. Cawthorn, D., Henirich, S.,Mann,

J.,Wursig,B., P. Shaughnessy, and Gales,R .

Aquaculture and marine mammals-co-existence or conflict.

In: 'Marine mammals and humans: towards a sustainable balance'.

Peter Shaughnessy A, Roger Kirkwood B, Martin Cawthorn C , Cath Kemper and David Pemberton

Pinnipeds, cetaceans and Australian fisheries; a review of operational interactions

In 'Marine mammals and humans: towards a sustainable balance'.

Symons, R.K., Gales, R., Pemberton, D., Burniston, D., Jaber, R., Piro, N., Trout, M., Yates, A., and Robertson, D.

Southern Hemisphere Cetaceans: A study of the POPs PCDDs/PCDFs and dioxin-like PCBs in Stranded Animals from the Tasmanian Coast.

Hume, F., Pemberton, D., Gales, R., Brothers, N. and Greenwood, M. (2003) *Trapping and relocating seals from salmonid fish farms in Tasmania, 1999-2000: was it a success?*

Papers and Proceedings of the Royal Society of Tasmania

Nigel Brothers, Alan Wiltshire, David Pemberton, Nick Mooney and Brian Green. (2003)

The feeding ecology and field energetics of the Pedra Branca skink (Niveoscincus palfreymani).

Wildlife Research, vol. 30: 81-86.



Above: Thomas Bock (artist) 'Miniature portrait of a gentleman' 1840
Left: Henry Gritten [artist] 'Hobart Town' 1856
Below: (detail) Offshore whaling with the 'Aladdin' and 'Jane' William Duke [Artist]





ADMINISTRATION

Director: Bill Bleathman
Deputy Director Public Programs and Operations: Lesley Kirby
Deputy Director Collections and Research: Andrew Rozefelds
Manager Budget and Administration: Des Wheelton
Executive Assistant: Pam Stewart
Administration Assistant: Jo Huxley
Administration Assistant: Stella O'Brien
Reception: Ann Hopkins
Reception: Judith Longhurst
Records Clerk: Belinda Bauer

OPERATIONS

Site Supervisor: Bruce White



FRONT OF HOUSE

Head Gallery Assistant:
Garry Armstrong
Deputy Head Gallery Assistant:
Kath Sinkora
Gallery Assistant: Adam Mooney
Gallery Assistant: Robin Campbell
Gallery Assistant: Julian Halls
Gallery Assistant: David Middleton
Gallery Assistant: Tamzine Bennett
Gallery Assistant: Edith Varga
Gallery Assistant: Kate Brown
Gallery Assistant: Kevin Gale
Gallery Assistant: Tristan Cosgrove
Gallery Assistant: Genevieve Cox
Gallery Assistant: Guy Cairnduff
Gallery Assistant: Mike Tobias
Gallery Assistant: Penny Malone
Gallery Assistant: John Vella
Gallery Assistant: Angela Strk



EXHIBITIONS

Coordinator Exhibitions and Design:
Adrian Spinks

Technical Assistant: Brian Looker
Technical Assistant: Jo Eberhard
Graphic Designer: Hannah Gamble
Technical Assistant: Mark Colegrave
Cabinet Maker: Graham Meikle
Heritage Furniture Unit: Tony Colman
Computer Systems Officer: Len Gay
Web and Imaging Officer
(part-time): Alexis Clark

VISITOR SERVICES

Coordinator: Kate Morris
Coordinator: Roberta Poynter
Coordinator: Liz Van Ommen
(Temporary)

Support Staff:

Jan Peacock (Art Guides Program)
Sue Miller
(First Look and Put up Your Hand)
Margaret McKerracher
(First and Second Look)
Margaret Luckman
(Step Back in Time)
Pamela Balon (Step Back in Time)

MARKETING and PROMOTIONS

Marketing and Promotions Officer:
Peter West
Volunteer: Carmen van den Berg

ART

Senior Curator: David Hansen
Curator: Sue Backhouse
Exhibitions Officer: Lance Cosgrove
Volunteers:
Pam Bennett, Donna Hartley,
Christine Harris, Jim Heyes, Minnie
Heyes, Shirley Hodgson, Bob Jager,
Christina Kirkpatrick, Margaret

McKerracher, Stephanie Schultz,
Stephanie Scott

CONSERVATION

Conservator (Painting): Erica Burgess
Conservator (Paper):
Cobus van Breda
Conservator (Framing): Ray Prince

DECORATIVE ARTS

Curator: Peter Hughes
Honorary Curator (Furniture):
Keith Vallance
Honorary Curator (Costume and Textiles): Stephen Cousens
Volunteers: Sonia Heap, Karen
Gorsuch, Robyn Claire, Allison Peters

GEOLOGY

Curator: Noel Kemp

HERBARIUM

Head of the Herbarium:
Gintaras Kantvilas
Senior Curator: Andrew Rozefelds
(until September 2002)
Senior Curator: Lyn Cave (Acting
September 2002 – April 2003)
Senior Curator: Marco Duretto
(from April 2003)
Curator: Alex Buchanan
Administrative/Clerical Officer:
Kim Hill
Graduate Weed Taxonomist:
Matthew Baker
Australian Virtual Herbarium Project Team:
Project Manager: Lyn Cave
Technical Officers: Jennifer Cooke,
Dalia Howe

Data-entry Officers: Timmothy
Newlands, Silvana Raglione
Honorary Botanists: Winifred Curtis;
Alan Gray; Dennis Morris; Rod Seppelt
Volunteers: Alan Bradshaw, Malcolm
Grant, Madelaine Hanson,
Sue McGuigan, Ray McKenzie,
Alison Napier

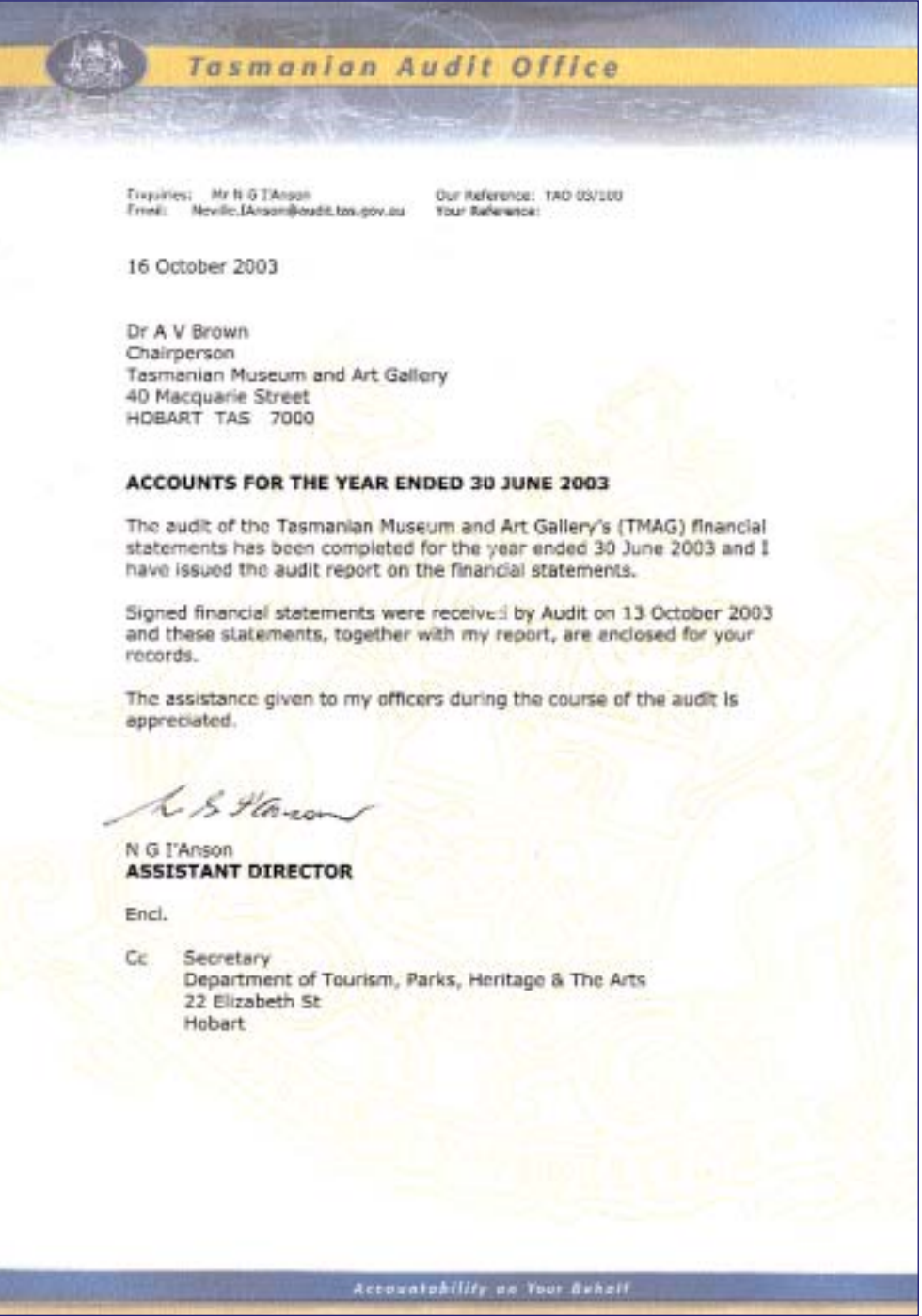
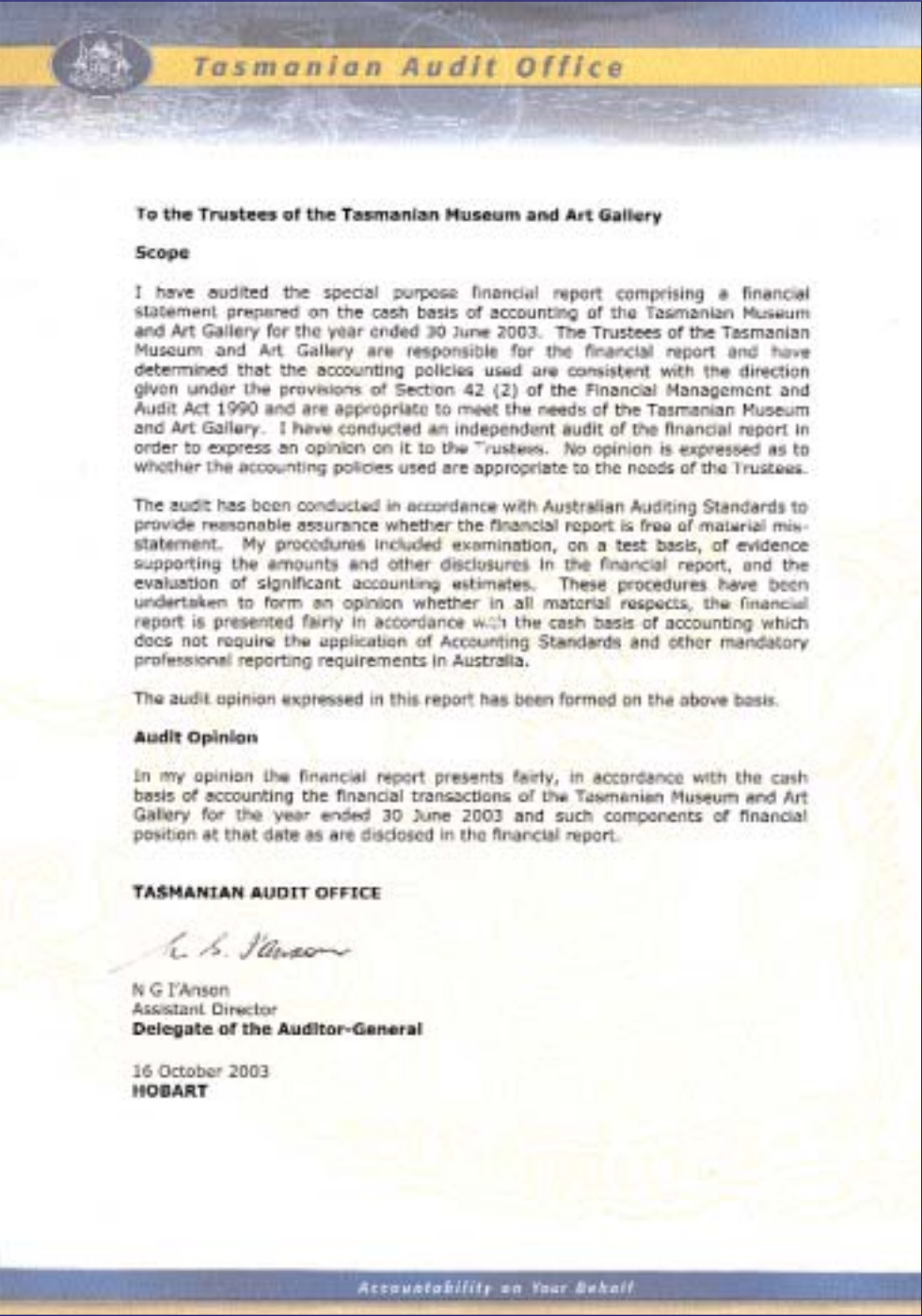
HISTORY

Senior Curator: Elspeth Wishart
Honorary Curator (Numismatics):
Roger McNeice
Honorary Curator (Philatelics and Honorary Associate Numismatics):
Ray Thompson
Honorary Curator (Medical History):
Philip Thomson
Honorary Curator (Golfing History):
Peter Toogood
History Assistant (part-time):
Joanne Huxley
Volunteers: David Dilger, Marjorie
Roberts, Angela Strk, Jessie Nossiter,
Barry Dallas, Mike Tobias

INFORMATION SERVICES

Coordinating Curator: Alison Melrose
Collection Manager Photography:
Vicki Farmery
Photographer: Simon Cuthbert
Librarian (part-time): Janet Middleton
Photographic Reproductions Officer
(part-time): Jacqui Ward
Volunteers:
Pat Black, Kieran Bourke, Richard
Brodribb, Mavis Claydon, Catherine
Palmer, Marjorie Roberts, David
Dilger, Jan Woodward

INDIGENOUS CULTURES



TASMANIAN MUSEUM AND ART GALLERY
FINANCIAL STATEMENTS
FOR THE YEAR ENDED 30 JUNE 2003
TABLE OF CONTENTS

CONTENTS:	PAGE
Summary of Payments and Receipts	2
Consolidated Fund Payments and Receipts	3
Funds Held in Trust	4
Notes on Funds with Significant Balances	6
Summary of Debts Outstanding	9
Notes to and Forming Part of the Financial Statements	10
Statements by Principal Officers	11
Audit Report	12

TASMANIAN MUSEUM AND ART GALLERY
SUMMARY OF PAYMENTS AND RECEIPTS
FOR THE YEAR ENDED
30 JUNE 2003

2001/2002		Notes	2002/2003
\$			\$
	PAYMENTS		
3,752,048	Consolidated Fund		4,131,957
876,206	Funds Held in Trust		809,752
4,628,254	TOTAL PAYMENTS		4,941,709
	RECEIPTS		
3,753,068	Consolidated Fund		4,131,957
1,050,551	Funds Held in Trust		1,068,990
4,803,619	TOTAL RECEIPTS		5,200,947

TASMANIAN MUSEUM AND ART GALLERY
CONSOLIDATED FUND PAYMENTS AND RECEIPTS
FOR THE YEAR ENDED
30 JUNE 2003

2001/2002		Notes	2002/2003
\$			\$
	PAYMENTS		
2,700,658	Employee Related Expenses		2,889,072
388,642	General Administrative Expenses		558,622
122,601	Information Technology		59,681
18,334	Personnel Expenses		18,516
517,181	Property Expenses		581,076
75,367	Travel and Transport		97,746
201,439	Misc. Works		222,478
38,288	General Maintenance		43,242
3,753,068	TOTAL PAYMENTS		4,131,957
	RECEIPTS		
3,753,068	Consolidated Fund Appropriation		4,131,957
3,753,068	TOTAL RECEIPTS		4,131,957

TASMANIAN MUSEUM AND ART GALLERY
FUNDS HELD IN TRUST
STATEMENT OF RECEIPTS AND PAYMENTS
FOR THE YEAR ENDED
30 JUNE 2003

Description	Notes	Opening Balance 1 July 2002	Receipts \$	Payments \$	Closing Balance 30 June 2003
Public Donations		5,350	1,145	948	5,547
Publications Bookshop		5,378	134,317	134,341	(356)
Bony Hoots Place		1,368	0	0	1,368
Art Foundation		(11,512)	10,335	2,823	(3,200)
Endowment Request		11,841	5,782	2,889	12,734
Planned Receipt		5,049	1,698	0	4,147
Collier Archaeological Project		2,234	0	0	2,234
Head Store Project		1,706	0	855	851
Photography		(1,229)	22,856	27,515	(5,888)
Time of Exhibition		15,818	14,125	1,116	28,827
R/W Cryptos		170,404	(14,310)	14,859	141,114
Museum Projects Account		60,443	61,315	70,371	51,387
Community Projects - Reduction		100,139	11,870	4,389	107,620
History Acquisition Program		47	465	0	512
Museum Courtyard Cafe		(15,402)	10,800	0	(4,602)
Director's Sitting Fees		211	12,800	13,270	(1,259)
Herbarium Trading		10,492	473	0	10,965
Visitor Services		3,949	3,887	2,499	5,337
AMRAC (Film Collection)		11,920	46,000	37,791	21,129
Administrative Maintenance Agreement		882	0	0	882
Tasmanian Gallery		1,100	0	0	1,100
Exhibition Development Fund (Science)		6,371	1,570	6,371	1,570
Flora of Tasmania		1,581	900	1,935	1,546
Heritage Furniture Unit		43,431	51,494	50,467	44,458
John Olsen Exhibition		35,916	0	26,850	9,066
Regis William Exhibition		88,287	80,472	261,786	(93,027)
Volunteer Art Guide Program		8,889	4,232	3,832	9,289
Vertebrate Zoology External		4,883	182	624	4,441
Display		8,388	19,217	20,833	7,772
Thyburn Year		7,727	808	310	8,225
Geology (Internal Fund)		(17)	17	0	0
IBUDC - Greenhouse		10,718	10,000	20,718	0
Indigenous 2001 Museum Exhib.		6,891	0	81	6,810
ANNT Exhibition		(1,333)	1,333	0	0
Information Services - Personal		10,514	0	518	10,016
History - External		5,844	0	0	5,844

TASMANIAN MUSEUM AND ART GALLERY

FUNDS HELD IN TRUST

STATEMENT OF RECEIPTS AND PAYMENTS

FOR THE YEAR ENDED

30 JUNE 2003

Continued...

Description	Notes	Opening Balance 1 July 2002	Receipts	Payments	Closing Balance 30 June 2003
Production and sale of Tasmania's Offshore Islands Book		(10,000)	7,929	(512)	(1,658)
Wild Exhibitions		330	0	330	0
Zoology/Childrens Space Upgrade		19,997	0	2,074	17,923
Bicentennial Exhibition Development		34,702	0	12,224	22,478
Conservation Survey of Collections		14,722	0	14,722	0
Australian Virtual Herbarium		(26,238)	318,000	155,973	(13,811)
Glover Printing Donations		1,651	51,169	52,603	420
Pugin Exhibition Catalogue		5,615	53,911	62,615	(1,105)
Conservation External		4,025	12,378	6,795	9,508
Baldwin Conservation Account		9,680	10,000	3,110	16,570
Pugin Merchandise Account		(4,336)	14,118	15,046	(3,864)
Credit Arts Publications		0	10,000	800	9,200
Return of Indigenous Cultural Property		0	23,000	8,720	14,280
Scientific Survey (Bentley) 2002		5,332	0	5,332	0
TOTAL		697,004	809,752	1,068,920	437,836

TASMANIAN MUSEUM AND ART GALLERY

FUNDS HELD IN TRUST

NOTES ON FUNDS WITH SIGNIFICANT BALANCES

FOR THE YEAR ENDED

30 JUNE 2003

Publications/Bookshop

This fund is the operating fund for the TMAG bookshop.

Art Foundation

This account was established to enable the purchase and support of approved art and related works and for the reimbursement of those expenses by the Art Foundation.

Photography

This fund is the operating account for commercial photographic operations of the TMAG. Some venture costs have been charged to this account to effect an income stream for this account.

South West Cryptos

This fund was established by the Herbarium unit of the TMAG from external funds to investigate particular botanical issues associated with the flora of South-West Tasmania. The balance available represents timing of the instalments of the grant.

Museum Project Account

This account provides for transactions associated with miscellaneous projects and services from general income.

Community Projects

This fund was established to consolidate professional services programs undertaken by Herbarium staff.

Museum Courtyard Café

The overdrawn balance in this account represents costs involved in the establishment of the Café. This amount is being reduced by monthly rental payable by the operators.

Visitor Services

This account is the operating account for educational and community programs co-ordinated by the Visitor Services Unit. Programs such as "A First Look" and the School Loan Program are processed through this account.

TASMANIAN MUSEUM AND ART GALLERY

FUNDS HELD IN TRUST

NOTES ON FUNDS WITH SIGNIFICANT BALANCES

FOR THE YEAR ENDED

30 JUNE 2003

Flora Collection

The Herbarium Unit of the TMAG established the ANRAD Flora Collection Project. An interstate research company funds the project to collect native Tasmanian flora for analysis. The balance available represents timing of the instalments of the grant.

Exhibition Development Fund (Sciences)

This account provides for transactions to assist in the development of science and other projects.

Heritage Furniture Unit

The Heritage Furniture Restoration Unit was established from the recommendations of the Trustees of TMAG. The balance available represents income earned that is to be expended on the restoration of important furniture items within the TMAG's collection.

John Glover Exhibition

This fund provides for the costs associated with the development of a major exhibition on colonial artist John Glover by TMAG.

Pugin-Willson Exhibition

This fund is used as an operating account for all receipts and payments associated with the national tour of TMAG's Pugin exhibition titled *Creating a Gothic Paradise: Pugin at the Antipodes*, which opened in Hobart in September 2002, and commenced a national tour in December 2002.

IRDC Dumblebee

This account was established to account for transactions associated with a three year grant received from the Horticultural Research and Development Corporation to undertake an Environmental Research on the Impact of Dumblebees in Australia. This project was completed in 2002/2003.

Bicentennial Exhibition Development

This account was established to record transactions associated with initial research and development costs for the Bicentennial Exhibitions in 2004.

TASMANIAN MUSEUM AND ART GALLERY

FUNDS HELD IN TRUST

NOTES ON FUNDS WITH SIGNIFICANT BALANCES

FOR THE YEAR ENDED

30 JUNE 2003

Australian Virtual Herbarium

This account was established to record transactions associated with the five-year development of digitising Tasmania's scientific plant specimens as part of a national on-line database to be available to the public and institutions.

Glover Printing Donations

This account was established to record transactions associated with the fund-raising campaign by the Art Foundation of Tasmania to cover the cost of the purchase of the painting *"Mr Wellington and Hobart Town from Kangaroo Point"* 1835 by John Glover.

Pugin Exhibition Catalogue

This account was established to record transactions associated with the sale of the catalogue during the exhibition in Hobart and on the national tour.

Pugin Merchandise Account

This account was established to record transactions associated with the sale of Pugin merchandise developed for the exhibition.

TASMANIAN MUSEUM AND ART GALLERY

SUMMARY OF DEBTS OUTSTANDING – FUNDS USED IN TRUST

DEBTORS LEDGER BALANCES	
30 June 2002 \$	30 June 2003 \$
27,970	33,680

AGED DEBTORS ANALYSIS AS AT 30 JUNE 2003				
Current \$	31 – 60 days \$	61 – 90 days \$	Over 90 days \$	Total Debts \$
5,531	14,082	3,730	12,337	35,680

BAD DEBTS WRITTEN OFF	
30 June 2002 \$	30 June 2003 \$
0	0

TASMANIAN MUSEUM AND ART GALLERY

NOTES TO AND FORMING PART OF THE FINANCIAL
STATEMENTS

FOR THE YEAR ENDED

30 JUNE 2003

1. STATUTORY REQUIREMENTS

The financial statements have been prepared in accordance with Section 27 of the *Financial Management and Audit Act 1990* and *Tasmanian Museum Act 1950* as amended.

2. SYSTEM OF ACCOUNTING

The Tasmanian Museum and Art Gallery operations include activities which have been funded from the Consolidated Fund and those that have been funded by the Museum Trustees. The Consolidated Fund activities are a component of the Department of Tourism, Parks, Heritage and the Arts.

The financial operations relating to Government funding are administered through the Public Account in accordance with the funding arrangements for the Consolidated Fund and the Special Deposits and Trust Fund. The Trustees funds are administered in a similar manner. The statements are prepared in accordance with the cash basis of accounting and amounts have been rounded to the nearest dollar. The system of accounting complies with the *Financial Management and Audit Act 1990* and Treasurer's Instructions.

3. STATEMENT OF ASSETS EMPLOYED

Values cannot be reliably determined in the case of the special museum collections, and accordingly no values are provided. A \$37,500,000 insurance provision has been made in respect of the collections.

4. CREDITORS

The total amount of creditor claims on hand as at 30 June 2003 was \$76,816 relating to the Consolidated Fund and \$11,262 relating to the Funds Held in Trust. Claims on hand as at 30 June 2002 were \$32,209 and \$29,953 respectively.

5. LEASES

There was no material financial or operating lease held at the end of the financial year.

6. LIABILITY FOR EMPLOYEE ENTITLEMENTS

There is no liability for employee entitlement in respect of operations, which are the responsibility of the Tasmanian Museum and Art Gallery Trustees.

7. ART FOUNDATION OF TASMANIA

Further funds are held by the Art Foundation of Tasmania which are applied to the use of the TMA&G in purchasing certain works of art.

STATEMENT BY PRINCIPAL OFFICERS

The accompanying financial statements of the Tasmanian Museum and Art Gallery have been prepared in compliance with the provisions of the Financial Management and Audit Act 1990. The financial statements are in agreement with the relevant accounts and records, so as to present fairly the financial transactions for the year ended 30 June 2003 and such components of financial position which are required by Treasurer's Instructions to be disclosed in the financial statements.

At the date of signing we are not aware of any circumstances which would render the particulars included in the financial statements misleading or inaccurate.

Dr A V (Tony) Brown
CHAIRMAN

Bill Bledsoe
DIRECTOR





Wongs' Collection

